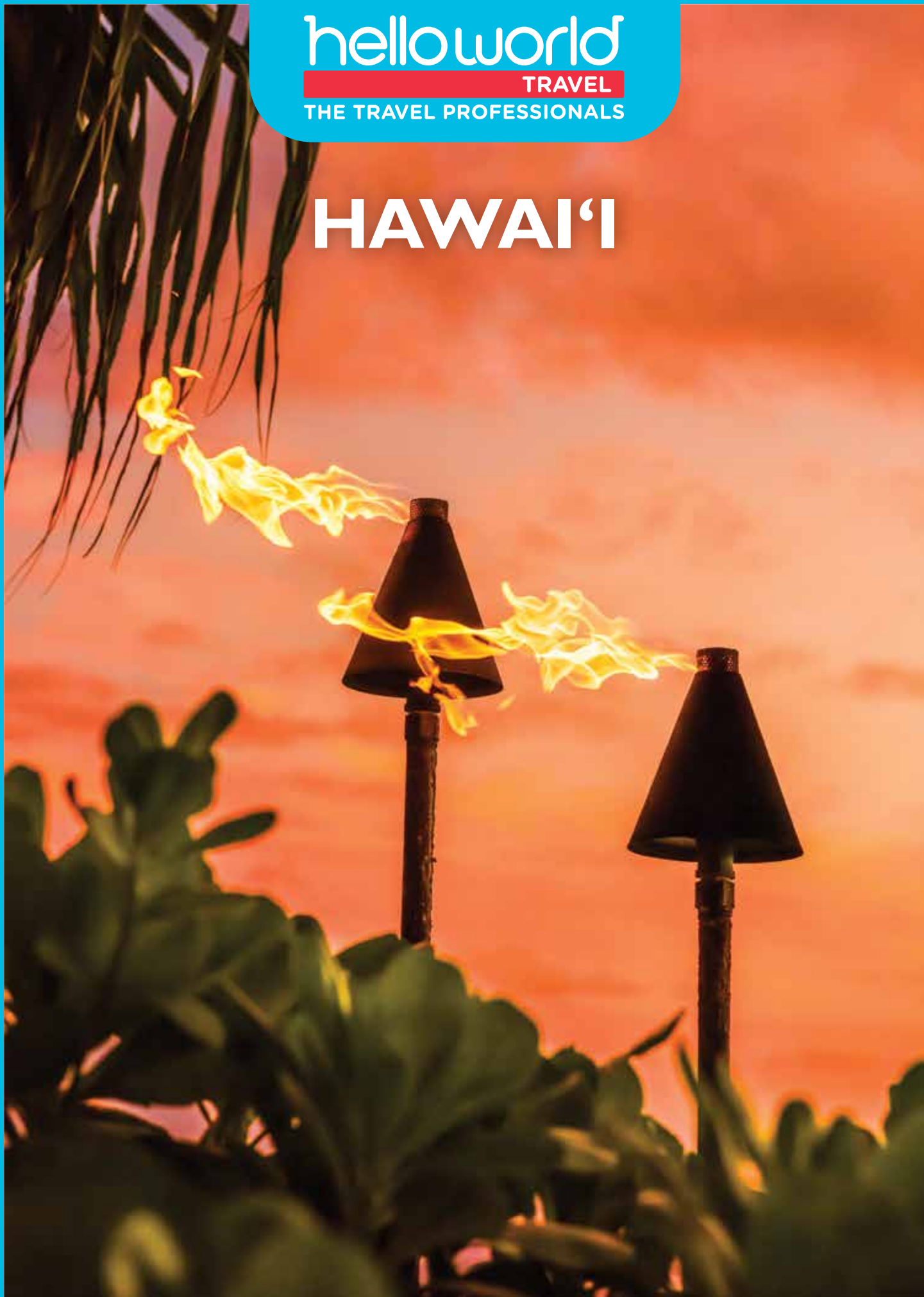


helloworld  
TRAVEL  
THE TRAVEL PROFESSIONALS

# HAWAI'I





# EXPERIENCE HAWAI'I WITH VIVA HOLIDAYS

Discover the beauty, culture and adventures waiting for you in Hawai'i. From learning to surf in the calm Waikiki waves to relaxing beachside with a Mai Tai in hand, Hawai'i is the place to find your holiday paradise.

With over 50 years of experience in the travel business, trust us to make your dream Hawaiian holiday a reality.

**CHOOSE VIVA HOLIDAYS AND LIVE A LIFE OF TRAVEL.**





Refresh with a dip in the pool of Waikani Falls and soak up the sun at the crescent shaped Hamoa Beach along the Road to Hāna



Kaua'i



## CONTENTS

Navigating This Brochure	5
Travel Tips	7
Experiences You'll Love	8
Car Hire	10
O'ahu	<b>11</b>
Maui	<b>24</b>
Island of Hawai'i	<b>28</b>
Kaua'i	<b>31</b>
Accommodation Index	34
Booking Conditions	35

## WHY CHOOSE VIVA HOLIDAYS

Viva Holidays has been creating exceptional worldwide holiday experiences for over 50 years. Your arrangements will be managed by our travel specialists who are dedicated to servicing enquiries to your chosen destination and are experts at designing holidays to perfectly suit your travel needs. You'll always be in experienced hands when you travel with Viva Holidays.

### MORE CHOICE

Our extensive product range caters for every type of holiday. Accommodation, car hire, theme parks, attractions, day and extended tours, rail tours and cruises – we've got it covered.

We have incredible deals available throughout the year, so make sure you ask your travel agent for our best price.

### EXCEPTIONAL SERVICE

Exceptional customer service is behind everything we do. That's why we were recognised as the Most Outstanding Wholesaler – Product/Service at the 2024 National Travel Industry Awards. Our team are passionate about travel and providing outstanding service. Let us do the research, planning and booking to ensure your holiday is one you'll always remember.



NATIONAL TRAVEL  
INDUSTRY AWARDS  
**2024**  
WINNER

### PEACE OF MIND

Viva Holidays is a proud member of ATAS, the Australian Federation of Travel Agents Travel Accreditation Scheme, having met the strict financial and customer service accreditation criteria. When you book your holiday with Viva Holidays, you will have peace of mind knowing that you are booking with one of Australia's most trusted travel companies.

### 24/7 ASSISTANCE

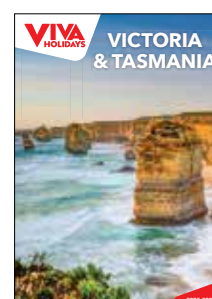
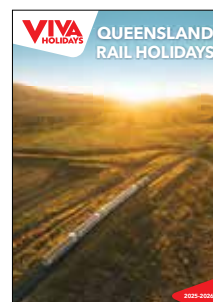
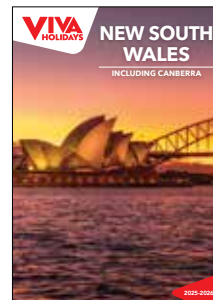
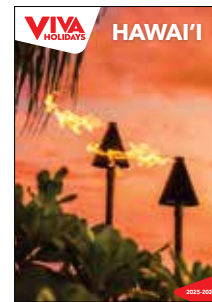
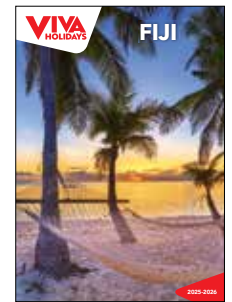
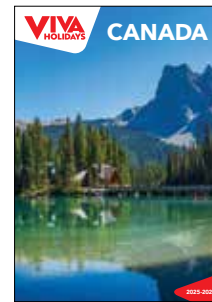
When you book with Viva Holidays, you'll never be on your own. In the event of unforeseen circumstances, our customer care team is available 24 hours a day, seven days a week.

### TAILOR MADE HOLIDAYS

Whether it's hopping between the stunning Hawaiian Islands, appreciating the panoramic views and deep valley gorges of Waimea Canyon or relaxing with a Mai Tai on the famous Waikiki Beach, our team of travel specialists can design a custom made itinerary just for you!

Let us create your dream holiday today.

LIVE A LIFE OF TRAVEL.  
LET VIVA HOLIDAYS TAKE YOU THERE!





Poipu Beach, Kaua'i



Pu'uhoonua o Honaunau National Historical Park, Island of Hawai'i

# NAVIGATING THIS BROCHURE

The following symbols should be used as a guide to assist in choosing the accommodation or touring option that best suits your needs.

Our Destination Specialists have negotiated a range of special offers. Look for the following symbols on individual property listings and ask your travel agent for full details of the offer available.



## Early Bird Offer

A discount off the regular room price is available at certain times of the year for advance bookings.



## Free Night Offer

Receive one or more free nights for stays at certain times of the year.



## Bonus Offer

A bonus offer is available at certain times of the year, e.g. free breakfast, food and beverage credit, spa treatment, late check-out, room upgrade and more.



## Kids Dining Offer

A dining offer for children is available, e.g. discounted or free meals. Child ages, meal types and conditions vary.



## Honeymoon Offer

A special bonus offer is available if you are celebrating your honeymoon. This may include sparkling wine, flowers, chocolate or fruit platters, welcome drinks, romantic dinners, spa treatments, late check-out or room upgrades. A minimum stay may be required and conditions vary. Advise your travel agent at the time of booking.

## SYMBOL GUIDE



FREE

Properties offering free Wi-Fi access in common areas and rooms.



Properties offering in-room disabled facilities.



Properties offering family friendly facilities, which may include a kids club, kids eat free offer, family or interconnecting rooms and discounts off a second room.



Properties featuring the Luxury Collection symbol, in our view, provide an exceptional standard of accommodation, facilities and service.

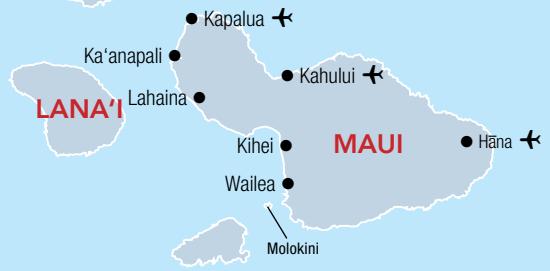
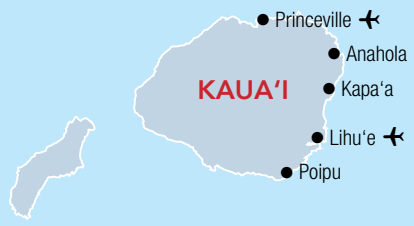
## OUR RATINGS

The accommodation ratings featured in this brochure will provide a general indication of the standard of accommodation and may alter throughout the year due to a change of circumstance. These are our views and are not related to any other rating system. We recommend checking with your travel agent to find the accommodation that best suits your needs and budget.

- ◆◆ Budget
- ◆◆◆ Comfortable
- ◆◆◆◆ Superior
- ◆◆◆◆◆ Deluxe
- ◇ Half rating



Hop in an outrigger canoe and ride the waves at Waikiki Beach



PACIFIC OCEAN





Hawaii Tourism Authority (HTA) / For Johnson

# TRAVEL TIPS

## WHEN TO GO

Hawai'i offers warm and sunny weather year round. The average sea temperature ranges from 25°C to 29°C allowing for great swimming weather all year long. May to October is hot and humid, so lather on the sunscreen and enjoy the many water activities the islands have to offer. November to April brings the wet season creating Hawai'i's rich, green, tropical environment. This season is the best time for avid surfers as large ocean swells create Hawai'i's legendary big waves.

## VISAS & PASSPORTS

All travellers to Hawai'i must carry a passport valid for at least six months beyond the date of departure from Australia and obtain the Electronic System for Travel Authorisation (ESTA) prior to travel, see [www.cbp.gov/esta](http://www.cbp.gov/esta) for more details. As visa information can change at any time, we recommend you seek advice regarding passports, visas, and other travel requirements for the countries you intend visiting from the Australian Government at [smartraveller.gov.au](http://smartraveller.gov.au)

## TIME

Hawai'i is 20 hours behind Australian Eastern Standard Time (AEST). Daylight Saving Time is not observed.

## CURRENCY

The US Dollar (USD) is the official unit of currency in Hawai'i.

## TIPPING

In Hawai'i tipping is expected in restaurants (15 – 20% of the bill), bars (USD1 per drink) and taxis (10 – 15%). Also tip hotel porters (USD1 – 2 per bag), housekeeping (USD1 – 2 per night), parking valets (USD3 – 5) and tour guides (USD2 per day).

## ELECTRICITY

110V 60Hz. Two flat pin plug. An adapter is required.

## ACCOMMODATION FEES

Some properties in Hawai'i charge mandatory fees, which are not included in the listed 'From' price. These fees cover a range of amenities and services provided by the hotel such as Wi-Fi, fitness centre access, cleaning services and damage protection fees. Fees are payable direct to your accommodation on check out, unless otherwise specified. The reasoning behind mandatory fees is to streamline the billing process and provide guests with a comprehensive package of amenities. Fees and their inclusions are subject to change, and you should check with your travel agent at the time of booking.

## GETTING AROUND

Take the time to explore and discover as you drive your way around the Hawaiian Islands. Driving is on the right hand side of the road.

## PUBLIC HOLIDAYS

Be prepared when you're travelling to Hawai'i as the state celebrates many national public holidays and events.

### 2025

Memorial Day	26 May
Independence Day	4 July
Veterans Day	11 November
Thanksgiving	27 November

### 2026

Martin Luther King Day	19 January
President's Day	16 February

Note: Black Friday occurs the day after Thanksgiving Day and is a public holiday in some states. It is one of the busiest shopping days of the year, as it marks the unofficial beginning of Christmas shopping.

## TEMPERATURE & RAINFALL

O'ahu	J	F	M	A	M	J	J	A	S	O	N	D
Temperature (max °C)	26	26	27	28	29	30	30	31	31	30	28	27
Average rainfall (mm)	60	50	56	16	16	7	13	15	20	48	63	85
Maui	J	F	M	A	M	J	J	A	S	O	N	D
Temperature (max °C)	26	26	27	27	29	29	30	30	30	30	28	27
Average rainfall (mm)	105	73	69	47	20	7	10	12	9	31	66	83
Island of Hawai'i	J	F	M	A	M	J	J	A	S	O	N	D
Temperature (max °C)	26	27	27	28	28	29	30	31	30	29	28	27
Average rainfall (mm)	198	180	270	255	161	108	146	149	117	139	210	211
Kaua'i	J	F	M	A	M	J	J	A	S	O	N	D
Temperature (max °C)	25	25	25	26	27	28	28	29	29	28	27	25
Average rainfall (mm)	150	85	106	89	80	43	54	45	60	112	138	131

- ✈ INTERNATIONAL AIRPORT
- ✈ REGIONAL AIRPORT

Waipi'o Bay

• Hilo ✈

ISLAND OF HAWAI'I



# EXPERIENCES YOU'LL LOVE

The best part of any journey is the experiences you have along the way, leaving you with memories to relive long after the holiday is over.

Hawai'i has countless amazing things to see and do. Here are some of our favourites to inspire your wanderlust.



## O'AHU'S NORTH SHORE

Soak up the laidback lifestyle of O'ahu's North Shore. A surfing mecca, this is the place to see pro surfers catch epic tubes. Waimea Bay, Ehukai Beach (Banzai Pipeline) and Sunset Beach are where you'll see big wave surfing. Between November and February the waves can swell up to 10 metres or more! Watch green sea turtles napping on the warm sand at Laniakea Beach and stop at charming Haleiwa for surf shops and rainbow-coloured shave ice. Don't miss Giovanni's Shrimp Truck, a local favourite.

## WONDERFUL WAIKIKI

Famous Waikiki Beach is the place to be. Relax on the warm Waikiki sands, soak up the sun and cool off with a dip in the welcoming waters. Learn to surf on the gentle waves or paddle out on an OUTRIGGER canoe. Stroll along Kalakaua Avenue where you'll find world-class shopping, dining and entertainment options. For the adventurous, hike the 1.3 kilometre trail to the summit of Diamond Head for stunning views of Waikiki. Take a snap with the Duke Kahanamoku statue, he was known as the 'father of modern surfing'. End each day with a refreshing Mai Tai.



## TV & MOVIE LOCATIONS

The islands of Hawai'i have been the backdrop to many movies and TV shows. From blockbuster films 50 First Dates and Blue Hawaii to iconic TV shows Magnum P.I. and Hawaii Five-0, Hawai'i's white beaches, lush jungles and stunning coastlines have been on show. The unofficial 'backlot of Hawai'i' Kualoa Ranch on O'ahu is host to many films. See the boneyard from Kong: Skull Island, the infamous fallen tree in Jurassic Park and Hurley's golf course from LOST. In Honolulu visit the Hawaii Five-0 headquarters, Ali'iolani Hale. On Kaua'i Wailua Falls may look familiar from the opening credits of Fantasy Island.







Watch a stunning Hawaiian sunset from Waikiki Beach

## HAWAI'I VOLCANOES NATIONAL PARK

Hawai'i Volcanoes National Park, on the Island of Hawai'i, delivers some of Mother Nature's most awe-inspiring wonders. Travel along Crater Rim Drive which circles Kilauea Caldera and see steam vents and sulphur banks. Walk one of the park's many hiking trails and discover craters, scalded deserts, rainforests and petroglyphs. For a different view, take a helicopter flight over the national park. See the enormity of this otherworldly landscape and the effects of the recent eruptions.



Hawai'i Volcanoes National Park

## HALEAKALA NATIONAL PARK

Feel the power of nature at Haleakala National Park on Maui. This dormant volcano's summit, at 3,055 metres above sea level, is the stage for breathtaking land and skylines. Wake up early and head to the Visitor Center to catch the sunrise. Watch the sun peek over the horizon and the sky light up with colour over a sea of clouds. Once the sun is up take in the Mars-like landscape. Hiking trails and horseback riding is available, so you can explore the park's natural beauty. For the night owls, watch the sun set or try stargazing.



Haleakala National Park

## NA PALI COAST

Towering dramatically over the ocean, the emerald-hued cliffs and razor sharp ridges of the Na Pali Coast on Kaua'i are an unforgettable sight. Take a boat ride or kayak along the coast and marvel at the soaring cathedral cliffs and beautiful hidden beaches. The adventurous will enjoy hiking along the Kalalau Trail for panoramic water views, cascading waterfalls and deep, narrow valleys. For stunning views without the hike, take to the skies on a helicopter flight over the lush green cliffs and see areas of the coast that are inaccessible by land and sea.



Kalalau Lookout

# CAR HIRE



## AVIS

Why not add Avis to your travel plans and make the most of your holiday by enjoying the flexibility and convenience that an Avis car rental provides. Situated at all major airports and offering a wide range of latest model vehicles to choose from, all at great rates, renting with Avis is sure to make your holiday escape more enjoyable.

### Includes:

- Unlimited mileage
- Loss Damage Waiver (LDW)
- State Tax
- Third Party Liability
- State Imposed Surcharge
- Airport Contract fee where applicable
- All vehicles include air-conditioning

### Does Not Include:

- Fuel
- Road tolls
- Additional driver fee
- Young driver fee
- Optional services and equipment
- One way rentals (subject to availability, ask your travel agent for details)

### Conditions:

All prices are based on a 24 hour rental period (e.g. pick up 9am the first day; drop off 9am the next day). Any time over the 24 hour period will incur an additional charge. Minimum age is 21. Drivers aged 21 to 24 years inclusive may incur an additional daily charge. Additional drivers must be at least 25 years. Drivers must have a full and valid driver's license. Renters with a prepaid voucher are required to leave a cash or credit card deposit to cover the estimated extra costs not included in the rate.

The vehicles shown are examples. Specific makes/ models within a car class may vary in availability and between locations.

Based on per vehicle. Not all vehicle types are available at all locations. Check with your travel agent at time of booking. Car hire prices for other states also available.



- Overnight Bag
- Medium Suitcase
- Large Suitcase

### KIA RIO (or similar)

#### GROUP A

- Auto
- 4 door hatch



x5

1-4 DAYS	5-7 PER WEEK	EXTRA DAYS
\$117*	\$582*	\$73*

GROUP A

### KIA SOUL (or similar)

#### GROUP B

- Auto
- 4 door sedan



x5

1-4 DAYS	5-7 PER WEEK	EXTRA DAYS
\$129*	\$649*	\$82*

GROUP B

### TOYOTA COROLLA (or similar)

#### GROUP C

- Auto
- 4 door sedan



x5

1-4 DAYS	5-7 PER WEEK	EXTRA DAYS
\$149*	\$741*	\$93*

GROUP C

### TOYOTA CAMRY (or similar)

#### GROUP E

- Auto
- 4 door sedan



x5

1-4 DAYS	5-7 PER WEEK	EXTRA DAYS
\$157*	\$783*	\$98*

GROUP E

### CHRYSLER 300 (or similar)

#### GROUP H

- Auto
- 4 door sedan



x5

1-4 DAYS	5-7 PER WEEK	EXTRA DAYS
\$211*	\$1051*	\$132*

GROUP H

### FORD MUSTANG (or similar)

#### GROUP K

- Auto
- 2 door convertible



x4

1-4 DAYS	5-7 PER WEEK	EXTRA DAYS
\$211*	\$1051*	\$132*

GROUP K

### TOYOTA RAV4 (or similar)

#### GROUP F

- Auto
- 4 door SUV



x5

1-4 DAYS	5-7 PER WEEK	EXTRA DAYS
\$200*	\$996*	\$125*

GROUP F

### FORD EDGE (or similar)

#### GROUP W

- Auto
- 4 door SUV



x5

1-4 DAYS	5-7 PER WEEK	EXTRA DAYS
\$211*	\$1051*	\$132*

GROUP W

### CHEVROLET TAHOE (or similar)

#### GROUP Z

- Auto
- 4 door SUV



x7

1-4 DAYS	5-7 PER WEEK	EXTRA DAYS
\$358*	\$1787*	\$224*

GROUP Z

### CHEVROLET SUBURBAN (or similar)

#### GROUP L

- Auto
- 4 door SUV



x7

1-4 DAYS	5-7 PER WEEK	EXTRA DAYS
\$387*	\$1935*	\$242*

GROUP L

\* FROM PRICES ARE A GUIDE ONLY, subject to change and availability and are in Australian Dollars. Prices are per vehicle per day, unless otherwise specified. For full terms and conditions, refer to the Booking Conditions on the inside back cover of this brochure.



Waikiki



## O'AHU

From buzzing city life to laidback surf towns, O'ahu offers an amazing and diverse range of experiences. Famous Waikiki boasts beachfront resorts, live Hawaiian entertainment and a variety of shopping options.

### SEE

- Watch the pro surfers on the North Shore
- See the movie sets and sights at Kualoa Ranch

### DO

- Hit the shops of Kalakaua Avenue
- Learn to surf at Waikiki Beach
- Visit the newest attraction at The LineUp at Wai Kai
- Climb to the top of Diamond Head for stunning views of Waikiki
- Visit Iolani Palace, the only royal home in the United States

### EAT & DRINK

- Sip on a Mai Tai at Duke's Waikiki
- Cool off with shave ice from Matsumoto Shave Ice in Hale'iwa
- Visit SALT at Our Kaka'ako for a range of local cuisines

### WHAT'S ON

#### Lei Day celebrations

1 May

#### Honolulu Triathlon

18 May

#### King Kamehameha I Day

11 June

#### Duke's OceanFest

15 to 24 August

#### Hawai'i Food and Wine Festival

October (dates to be confirmed)

#### Triple Crown of Surfing

November to December (dates to be confirmed)

### O'AHU

REF.	HOTELS	PAGE
1	Courtyard by Marriott O'ahu North Shore	23
2	The Ritz-Carlton O'ahu, Turtle Bay	23

### WAIKIKI

REF.	APARTMENTS	PAGE
3	Aston Waikiki Beach Tower	19
4	Aston Waikiki Sunset	15
5	Embassy Suites by Hilton Waikiki Beach Walk	16
6	Ilikai Hotel & Luxury Suites	18
7	Ka La'i Waikiki Beach, LXR Hotels & Resorts	22
8	The Ritz-Carlton Residences, Waikiki Beach	21

REF.	HOTELS	PAGE
9	Aston Waikiki Circle Hotel	14
10	Halekulani	21

REF.	HOTELS	PAGE
11	Hilton Hawaiian Village Waikiki Beach Resort	19
12	Hilton Waikiki Beach Resort & Spa	16
13	Holiday Inn Express Waikiki	14
14	Hyatt Centric Waikiki Beach	16
15	Hyatt Regency Waikiki Beach Resort & Spa	20
16	Luana Waikiki Hotel & Suites	15
17	Moana Surfrider, A Westin Resort & Spa	21
18	Oasis Hotel Waikiki	14
19	OUTRIGGER Reef Waikiki Beach Resort	20
20	OUTRIGGER Waikiki Beachcomber Hotel	17
21	OUTRIGGER Waikiki Beach Resort	17
22	OUTRIGGER Waikiki Paradise Hotel	18
23	Prince Waikiki	18
24	The Royal Hawaiian, A Luxury Collection Resort	21
25	Sheraton Princess Kaiulani	16
26	Sheraton Waikiki Beach Resort	19
27	Waikiki Beach Marriott Resort & Spa	19
28	Waikiki Malia	15

# O'AHU TOURS



## AIRPORT TRANSFERS

Get your holiday off to a great start with a door-to-door shared coach transfer service. Convenient transfers are available 24 hours a day, 7 days a week from Daniel K. Inouye International Airport in Honolulu to Waikiki and other Honolulu accommodation.

Approximate travel distance from Daniel K. Inouye International Airport, Honolulu to Waikiki is 18 kilometres and the North Shore is 60 kilometres.

	Adult/Child
Waikiki accommodation & Pier	\$40*^
North Shore accommodation	\$204*^

^Price based on per person one way to/from Daniel K. Inouye International Airport, Honolulu. Children 0 to 3 yrs are free when they do not occupy a seat.



## ULTIMATE PEARL HARBOR EXPERIENCE

This full day tour includes a visit to the USS Missouri, USS Arizona Memorial and the Pearl Harbor Aviation Museum where you can explore two indoor hangers.

The day ends with a drive through O'ahu's historic and famous Downtown Honolulu, getting a firsthand look at famous landmarks like Punchbowl Cemetery, Iolani Palace, the statue of Hawaii's King Kamehameha and more.

### Includes:

- Admission Pearl Harbor Visitor Center and USS Arizona Memorial • Admission to USS Missouri
- Pearl Harbor Aviation Museum
- National Memorial Cemetery of the Pacific
- Downtown tour and Iolani Palace tour
- Return transfers from Waikiki accommodation

**Duration:** 9 hours

**Departs:** Daily from Waikiki at 9am

	Adult	Child 3-9 yrs
Full Day Tour	\$253*	\$152*



## PRIVATE AIRPORT TRANSFERS

Arrive in style with a private car transfer. Car transfers are available from Daniel K. Inouye International Airport, Honolulu to Waikiki and Honolulu accommodation, 24 hours a day, 7 days a week. Sit back, relax and enjoy the passing scenery as you are transferred in air-conditioned comfort.

Approximate travel distance from Daniel K. Inouye International Airport to Waikiki is 18 kilometres, and the North Shore is 60 kilometres.

	1 to 5 People
Waikiki accommodation & Pier	\$357*^
North Shore accommodation	\$860*^

^Price based on per vehicle one way to/from Daniel K. Inouye International Airport, Honolulu.



## PARADISE COVE HAWAIIAN LUAU

Experience a genuine Hawaiian luau. Be greeted with a lei and a welcome Mai Tai upon arrival. See the imu ceremony and enjoy a Hawaiian buffet while watching games of skill and daring plus arts and crafts demonstrations. Upgrade to the Deluxe Luau so you can take in the spectacular entertainment from the best seat in the house, as well as a Hawaiian luau menu with table service.

### Includes:

- Welcome Mai Tai and Lei
- Hawaiian luau buffet dinner (Luau)
- À la carte Hawaiian menu (Deluxe Luau)
- Polynesian show
- Return transfers from Waikiki accommodation

**Duration:** 6 hours

**Departs:** Daily from Waikiki at 3:15pm

	Adult	Child 4-12 yrs
Hawaiian Luau	\$284*	\$209*
Deluxe Luau	\$455*	\$351*



## WAIKELE OUTLETS SHUTTLE

Waikale Premium Outlets is a true shopper's delight. If you've come to Hawai'i with a shopping list, make sure to check out the Waikale Outlets first for discounts.

The Waikale Outlets Shopping Shuttle – Roberts Hawaii's most popular activity on O'ahu – is the hassle-free way to go shopping for bargains in more than 50 legendary brand name stores. Let Roberts Hawaii pick you up at one of their convenient locations throughout Waikiki. Then just sit back and relax in a plush, air-conditioned motor coach. No traffic. No parking. No worries.

### Includes:

- Return Waikale Outlets Shopping Shuttle
- Waikale Premium Outlets digital VIP booklet

**Duration:** 5 hours 30 minutes

**Departs:** Wed, Fri at 9:40am, 11:50am

	Adult	Child 4-11 yrs
Return Shuttle	\$59*	\$54*



## PACIFIC STAR SUNSET BUFFET & SHOW CRUISE

Enjoy a fun tropical evening on the Pacific Star Sunset Buffet & Show Cruise. Starting with a welcome Mai Tai, delicious Pacific Rim dinner buffet with roast beef carving station, a fun Polynesian show and breathtaking views of the sunset and Waikiki coastline.

### Includes:

- 2 hour cruise aboard the Star of Honolulu
- One signature Mai Tai
- Pacific rim roast beef dinner
- Live entertainment including pier-side welcome hula
- Spectacular views of the Waikiki coastline and sunset

**Duration:** 2 hours

**Departs:** Daily from Waikiki at 5:30pm

	Adult	Child 3-11 yrs
Sunset Dinner Cruise	\$196*	\$118*

\*FROM PRICES ARE A GUIDE ONLY, subject to change and availability and are in Australian Dollars. Prices are per person, unless otherwise specified and based on travel in low season. For full terms and conditions, refer to the Booking Conditions on the inside back cover of this brochure.



### BEST OF KUALOA EXPERIENCE

Visit Kualoa, a working cattle ranch, and farm, for exciting adventures! See where many Hollywood movies and TV shows were filmed including Jurassic Park, 50 First Dates and Hawaii Five-O on the Movie Site Tour. Explore the 55 acre garden on the Tropical Garden Tour. Taste native fruit and learn about the plants that grow in Hawai'i. Top off your day with the Jungle Expedition Tour that boasts an exciting jeep ride to breathtaking views of nature and ocean.

**Includes:**

- 90 minute Hollywood Movie Site tour
- 90 minute Kualoa Grown tour
- 90 minute Jurassic Jungle Jeep Expedition
- Kualoa Ranch House Lanai lunch pack
- Return transfers from Waikiki accommodation

**Duration:** 8 hours 30 minutes

**Departs:** Daily from Waikiki at 7:15am

	Adult	Child 3-12 yrs
Full Day Tour	<b>\$349*</b>	<b>\$241*</b>



### LUAU & ROCK-A-HULA SHOW

Enjoy a spectacular Hawaiian night with the Waikiki Luau Buffet & Rock-A-Hula Show ticket package. Dine under the stars in an outdoor cabana with an upscale island luau buffet and Mai Tai while performers serenade you with Hawaiian music and hula. Then, enjoy Waikiki's largest Hawaiian show from premier seats in the mezzanine of the 750-seat Royal Hawaiian Theater!

**Includes:**

- Luau welcome and Mai Tai
- Luau buffet dinner
- Live Hawaiian music and hula during dinner
- Premier mezzanine seats for Rock-A-Hula show
- Meet and greet with the cast

**Duration:** 3 hours 30 minutes

**Departs:** Sat to Thu from Waikiki at 5:30pm

	Adult	Child 3-9 yrs
Dinner Show	<b>\$221*</b>	<b>\$132*</b>



### GRAND CIRCLE ISLAND TOUR

This tour is the perfect way to see all of O'ahu's must-see sights in one day! Experience stunning Hanauma Bay, the North Shore surfing beaches, cultural Waimanalo town, and the historic Byodo-In and Laie Hawai'i temples. Visit the Dole Plantation and stop for photo opportunities at the 'Blow Hole' and Nu'uuanu Pali Lookout.

**Includes:**

- Visit some of the top highlights of O'ahu including Diamond Head, Hanauma Bay, the Blow Hole, Kualoa Ranch, the Dole plantation and more
- Expert driver/guide
- Return transfers from Waikiki accommodation

**Duration:** 9 hours 30 minutes

**Departs:** Daily from Waikiki at 6:45am

	Adult	Child 4-11 yrs
Full Day Tour	<b>\$265*</b>	<b>\$211*</b>



### ONE DAY MAUI: HEAVENLY HĀNA

This all-day tour will take you to the beautiful windward region of the "Majestic Valley Isle," showing you some of the most diverse and scenic landscapes. Weave through the lush tropical rainforest, there are more than 600 curves and 59 one-lane bridges on the Road to Hāna with stunning vistas, cascading waterfalls, and spectacular coastal scenery galore! Sit back, relax and enjoy the view from a comfortable air-conditioned mini coaches.

**Includes:**

- Picnic lunch
- Experienced driver/guide with expert commentary
- Return flight from Honolulu
- Return transfers from Waikiki accommodation

**Duration:** 15 hours

**Departs:** Sun to Tue from Waikiki at 5:45am

	Adult/Child
Full Day Tour	<b>\$1050*</b>



### ONE DAY KAUAI: HAWAI'I MOVIE TOURS

Kauai'i is a place that sets the imagination soaring. Her extraordinary beauty and charm have been immortalized in dozens of Hollywood films and television shows and yet, there's nothing like seeing the real thing. The Hawaii Movie Tours on Kauai'i is a unique opportunity to experience the island through the filmmaker's lens on an incredible guided tour of Kauai'i's famous movie locations.

**Includes:**

- Experienced driver/guide with expert commentary
- Transport by air-conditioned coach
- Return flight from Honolulu
- Return transfers from Waikiki accommodation

**Duration:** 13 hours 30 minutes

**Departs:** Mon, Wed, Fri from Waikiki at 4:15am

	Adult/Child
Full Day Tour	<b>\$1050*</b>



### ONE DAY HILO: VOLCANO TOUR

Spend the day exploring the unique geography of Hawai'i's "Big Island". A visit to Hawai'i Volcanoes National Park will inform you about the seismic activity that's been a constant on the Big Island. You'll see Mauna Loa, the world's largest volcano, and Kilauea, the world's most active volcano. You'll also see dormant volcanoes, lava beds, and steam vents while discovering the legends meant to explain these natural phenomena. While there is no guarantee of a red-hot lava flow sighting, you may see a smoldering crater or a steam vent.

**Includes:**

- Experienced driver/guide with expert commentary
- Return flight from Honolulu
- Return transfers from Waikiki accommodation

**Duration:** 13 hours 30 minutes

**Departs:** Tue, Thu from Waikiki at 4:15am

	Adult/Child
Full Day Tour	<b>\$1050*</b>

\*FROM PRICES ARE A GUIDE ONLY, subject to change and availability and are in Australian Dollars. Prices are per person, unless otherwise specified and based on travel in low season. For full terms and conditions, refer to the Booking Conditions on the inside back cover of this brochure.

# O'AHU ACCOMMODATION

## ASTON WAIKIKI CIRCLE HOTEL



Ocean Front

2464 Kalakaua Avenue, Honolulu  
MAP PAGE 11

From **\$437\*\***

- ❖ Updated guest rooms feature two double beds and private balconies
- ❖ Complimentary hula show under the banyan tree three times a week
- ❖ Easy access to shopping, dining and activities

**Location:** On Kalakaua Avenue and directly across from Waikiki Beach. Distances: Beach across road, International Market Place 400m.

**Property Features:** Wi-Fi (extra charge), Restaurant, 24 hour reception, Laundry/dry cleaning services (extra charge), Parking (extra charge), 104 rooms.

**Room Features:** Air-conditioning, Balcony, Tea/coffee making facilities, Mini fridge, Cable TV, Docking station, Ironing facilities, Hair dryer, Safe.

**Max Capacity:** Hotel Standard/Partial Ocean View/Ocean View/Ocean Front – 4.

† Mandatory fee of USD30.67 applies per room per day, to be paid directly to the hotel. Refer to page 7 for details.



## OASIS HOTEL WAIKIKI



Hotel

320 Lewers Street, Honolulu  
MAP PAGE 11

From **\$348\*\***

- ❖ All rooms feature private balconies
- ❖ Aloha Steak House Waikiki is open for lunch and dinner
- ❖ Great for families with a guest laundry and rooms with cooking facilities

**Location:** On lively Lewers Street, this property is only a short stroll to great shopping and dining. Distances: Beach 600m, Royal Hawaiian Center 100m.

**Property Features:** Wi-Fi (extra charge), Pool, Restaurant, Sauna, Guest laundry, 24 hour reception, Valet parking (extra charge), 96 rooms.

**Room Features:** Air-conditioning, Balcony, Tea/coffee making facilities, Limited cooking facilities (except Hotel Room), Cable TV, Ironing facilities, Hair dryer, Safe.

**Max Capacity:** Hotel/Club Suite – 4, Junior Suite with Kitchenette/1 Bedroom Suite – 5.

† Mandatory fee of USD38.92 applies per room per day, to be paid directly to the hotel. Refer to page 7 for details.



## HOLIDAY INN EXPRESS WAIKIKI



Waikiki View

2058 Kuhio Avenue, Honolulu  
MAP PAGE 11

From **\$440\*\***

- ❖ Family friendly Sky Deck featuring outdoor pool and mini-golf
- ❖ Views of Waikiki Beach and the Pacific Ocean
- ❖ Comfortable and stylish guest rooms with modern amenities

**Includes full breakfast daily.**

**Location:** Conveniently located near shopping, dining, and activities. Only 3 blocks from Waikiki beach. Distances: Beach 900m, International Market Place 1.3km.

**Property Features:** Pool, Spa, Lobby market, Gym, Games room, Guest laundry (extra charge), Parking (extra charge), 600 rooms.

**Room Features:** Air-conditioning, Tea/coffee making facilities, Microwave, Mini fridge, Ironing facilities, Hair dryer, Safe.

**Max Capacity:** Waikiki View/Partial Ocean View/Ocean View – 4.

† Mandatory fee of USD38.92 applies per room per day, to be paid directly to the hotel. Refer to page 7 for details.



WAIKIKI MALIA



Waikiki View

2211 Kuhio Avenue, Honolulu  
MAP PAGE 11

From **\$387\*\***

- ◆ In the heart of Waikiki near the beach, shopping and dining
- ◆ Renovated guest rooms in the Malia Tower
- ◆ IHOP Restaurant on-site

**Location:** Less than a 10 minute walk to the International Market Place and Waikiki Beach. Distances: Beach 700m, Royal Hawaiian Center 300m.

**Property Features:** Pool, Spa, Restaurant, Bar, Gym, Laundry/dry cleaning service, Parking (extra charge), 327 rooms.

**Room Features:** Air-conditioning, Balcony, Mini fridge, Tea/coffee making facilities, 55" Smart TV with Google Chrome, Ironing facilities, Hair dryer, Safe.

**Max Capacity:** Waikiki View/Partial Ocean View – 4.

**\* Mandatory fee of USD35.39 applies per room per day, to be paid directly to the hotel. Refer to page 7 for details.**



ASTON WAIKIKI SUNSET



1 Bedroom Standard

229 Paoakalani Avenue, Honolulu  
MAP PAGE 11

From **\$366\*\***

- ◆ Recreation deck with barbecue stations and swimming pool
- ◆ Perfect for families with suites accommodating up to six guests
- ◆ All suites include full kitchens and separate living areas

**Location:** Only a short walk to Waikiki Beach, Kapi'olani Park and the Honolulu Zoo. Distances: Beach 400m, International Market Place 950m.

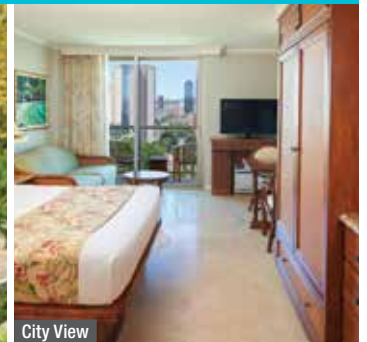
**Property Features:** Wi-Fi (extra charge), Pool (heated), Barbecue area, Gym, Laundry/dry cleaning service (extra charge), Parking (extra charge), Convenience store, 435 rooms.

**Room Features:** Air-conditioning, Balcony, Tea/coffee making facilities, Kitchen with microwave, DVD player, Cable TV, Ironing facilities, Hair dryer, Safe.

**Max Capacity:** 1 Bedroom Standard/1 Bedroom Partial Ocean View/1 Bedroom Deluxe Ocean View – 4, 2 Bedroom Diamond Head/2 Bedroom Diamond Head Partial Ocean View/2 Bedroom Diamond Head Ocean View/2 Bedroom Penthouse Mountain View – 6.

**\* Mandatory fee of USD41.28 applies per room per day, to be paid directly to the hotel. Refer to page 7 for details.**

LUANA WAIKIKI HOTEL & SUITES



City View

2045 Kalakaua Avenue, Honolulu  
MAP PAGE 11

From **\$324\*\***

- ◆ Great for self-catering with cooking facilities in select rooms
- ◆ Complimentary Manager's Wine Reception every Monday, Wednesday and Friday from 5pm to 6pm

**Location:** Overlooking Fort DeRussy Park and a short stroll to the beach, world-class shopping and dining. Distances: Beach 800m, Royal Hawaiian Center 550m.

**Property Features:** Wi-Fi (extra charge), Pool, Sundeck, Restaurant, Gym, Barbecue area, Laundry/dry cleaning service, 24 hour reception, Parking (extra charge), 217 rooms.

**Room Features:** Air-conditioning, Balcony, Limited cooking facilities (Studios), Kitchen (1 and 2 Bedrooms), Ironing facilities, Hair dryer, All rooms non smoking.

**Max Capacity:** City View/Partial Ocean View/Studio Kitchenette/Studio Kitchenette Partial Ocean View, 1 Bedroom City View/1 Bedroom Ocean View – 4, 2 Bedroom City View – 6.

**\* Mandatory fee of USD43.64 applies per room per day, to be paid directly to the hotel. Refer to page 7 for details.**



\*FROM PRICES ARE A GUIDE ONLY, subject to change and availability and are in Australian Dollars. Prices are per room per night for 2 people, unless otherwise specified and based on the lowest room category for travel in low season. For full terms and conditions, refer to the Booking Conditions on the inside back cover of this brochure.

# O'AHU ACCOMMODATION

## SHERATON PRINCESS KAIULANI



Kaiulani

120 Kaiulani Avenue, Honolulu  
MAP PAGE 11

From **\$488\*\***

- ❖ Te Moana Nui Dinner Show performed three times a week showcasing Polynesian storytelling and entertainment
- ❖ Splash Bar is the place for cocktails and live entertainment

**Location:** Just steps from Waikiki Beach as well as shopping and dining options. Distances: Beach 250m, International Market Place 200m.

**Property Features:** Pool, Restaurants (2), Bar, Room service, Gym, Day spa, Nightly poolside entertainment, Parking (extra charge), 1142 rooms.

**Room Features:** Air-conditioning, Balcony, Tea/coffee making facilities, Mini fridge, Ironing facilities, Hair dryer, Safe.

**Max Capacity:** Kaiulani/City/Tower City/Princess Pool/Tower Partial Ocean/Tower Skyline Partial Ocean/Tower Ocean/Princess Ocean/Tower Premier Ocean – 4.

† Mandatory fee of USD38.93 applies per room per day, to be paid directly to the hotel. Refer to page 7 for details.



## EMBASSY SUITES BY HILTON WAIKIKI BEACH WALK



1 Bedroom City Queens

201 Beachwalk, Honolulu  
MAP PAGE 11

From **\$736\*\***

- ❖ All suite hotel with spacious one and two bedroom suites
  - ❖ Evening poolside reception with complimentary cocktails and nibbles
  - ❖ Open Air Grand Lanai features a pool and cabana rentals
- Includes full breakfast daily and evening cocktail reception.**

**Location:** In the heart of Waikiki Beach Walk, this property is surrounded by shopping and dining options. Distances: Beach 300m, Royal Hawaiian Center across road.

**Property Features:** Wi-Fi (extra charge), Pool, Spa, Sundeck, Restaurant, Bar, Evening entertainment, Guest laundry, Gym, Valet parking (extra charge), 369 rooms.

**Room Features:** Air-conditioning, Cable TV, Microwave, Tea/coffee making facilities, Ironing facilities, Hair dryer, Safe.

**Max Capacity:** 1 Bedroom Standard King/1 Bedroom City King/1 Bedroom Ocean View King – 4, 1 Bedroom Standard Queens/1 Bedroom City Queens/1 Bedroom Partial Ocean View Queens/1 Bedroom Ocean View Queens – 5, 2 Bedroom City View – 6.

† Mandatory fee of USD47.18 applies per room per day, to be paid directly to the hotel. Refer to page 7 for details.



## HILTON WAIKIKI BEACH RESORT & SPA



City View King

2500 Kuhio Avenue, Honolulu  
MAP PAGE 11

From **\$486\*\***

- ❖ Poolside bar and dining at Hang 10 Bar & Grill
- ❖ 24 hour dining, 7 days a week at M.A.C. 24/7 Bar + Restaurant
- ❖ Complimentary poolside cabanas

**Location:** On Kuhio Avenue, only one block to Waikiki Beach and a short walk to shops and restaurants. Distances: Beach 250m, International Market Place 700m.

**Property Features:** Wi-Fi (extra charge), Pool (heated), Spa, Sundeck, Restaurants (2), Bars (3), Café, Gym, Laundry/dry cleaning service, Lift, 24 hour reception, Valet parking (extra charge), Resort shop, 601 rooms.

**Room Features:** Air-conditioning, Balcony, Tea/coffee making facilities, Mini fridge, Cable TV, In-room movies (pay to view), Ironing facilities, Hair dryer, Safe.

**Max Capacity:** City View King – 2, City View Double/Mountain View/Deluxe Mountain View/Deluxe Ocean View/Premium Mountain View/Premium Ocean View – 4.

† Mandatory fee of USD41.29 applies per room per day, to be paid directly to the hotel. Refer to page 7 for details.



## HYATT CENTRIC WAIKIKI BEACH



King Bed

349 Seaside Avenue, Honolulu  
MAP PAGE 11

From **\$466\*\***

- ❖ Spacious and bright rooms with floor-to-ceiling windows
- ❖ Rooftop Splash Lounge with beach lounge chairs, private cabanas and an outdoor fire pit

**Location:** Right in the heart of Waikiki and close to island-inspired eateries and endless shopping options. Distances: Beach 500m, Royal Hawaiian Center 280m.

**Property Features:** Pool (splash lounge), Spa, Restaurant, Fire pit, 24 hour gym, Dry cleaning service, Lift, 24 hour reception, Parking (extra charge), 230 rooms.

**Room Features:** Air-conditioning, Tea/coffee making facilities, Mini fridge, Cable TV, Ironing facilities, Hair dryer, Safe.

**Max Capacity:** King Bed/King Bed Deluxe/King Bed Ocean Views – 3, 2 Double Beds/2 Queen Beds Deluxe/Mountain View Suite/Ocean Suite – 4. Other room types also available.

† Mandatory fee of USD38.93 applies per room per day, to be paid directly to the hotel. Refer to page 7 for details.





**OUTRIGGER WAIKIKI BEACH RESORT**



City View

2335 Kalakaua Avenue, Honolulu  
MAP PAGE 11

From **\$782\*\***

- ❖ Home to famous Duke's Waikiki
- ❖ Beachfront pool and deck, great for soaking up the warm Hawaiian sun
- ❖ Voyager 47 Club Lounge includes daily breakfast and evening appetisers

**Location:** Occupying a prime location on the widest stretch of iconic Waikiki Beach. Distances: Beachfront, International Market Place across road.

**Property Features:** Pool, Spa, Restaurants (2), Café, Bars (2), Day spa, Gym, Voyager 47 Club Lounge (Club rooms and Club suites), Laundry/dry cleaning service, Valet parking (extra charge), 524 rooms.

**Room Features:** Air-conditioning, Balcony, Tea/coffee making facilities, Cable TV, Bathrobes and slippers, Hair dryer, Safe.

**Max Capacity:** City View/Partial Ocean View/Ocean View/Ocean Front/1 Bedroom Ocean Front Suite – 4. Club rooms and Club suites also available.

\*Mandatory fee of USD53.06 applies per room per day, to be paid directly to the hotel. Refer to page 7 for details.



Voyager 47 Club Lounge



**OUTRIGGER WAIKIKI BEACHCOMBER HOTEL**



Waikiki View King

2300 Kalakaua Avenue, Honolulu  
MAP PAGE 11

From **\$600\*\***

- ❖ Home to Cirque du Soleil Hawai'i – Cirque Du Soleil Auana
- ❖ Hawaiian grown Kona coffee at the photo-worthy Hawaiian Aroma Caffe
- ❖ Spacious and stylish rooms feature décor by local Hawaiian artists

**Location:** In the heart of Waikiki on Kalakaua Avenue and close to shopping and dining options. Distances: Beach 200m, International Market Place 10m.

**Property Features:** Wi-Fi (extra charge), Pool (outdoor), Sundeck, Pool bar, Restaurant, Gym, Guest laundry, Valet parking (extra charge), 498 rooms.

**Room Features:** Air-conditioning, Balcony, Refrigerator, Tea/coffee making facilities, TV with Chromecast, Ironing facilities, Hair dryer, Safe.

**Max Capacity:** Waikiki View King/Partial Ocean View King/Ocean View King/Deluxe Ocean View King – 3, Waikiki View Double/Partial Ocean View Double/Ocean View Double/Deluxe Ocean View Double/1 Bedroom Ocean View Suite – 4, Junior Suite – 5.

\*Mandatory fee of USD47.18 applies per room per day, to be paid directly to the hotel. Refer to page 7 for details.



\*FROM PRICES ARE A GUIDE ONLY, subject to change and availability and are in Australian Dollars. Prices are per room per night for 2 people, unless otherwise specified and based on the lowest room category for travel in low season. For full terms and conditions, refer to the Booking Conditions on the inside back cover of this brochure.

# O'AHU ACCOMMODATION

## ILIKAI HOTEL & LUXURY SUITES



Luxury Junior Suite City View

1777 Ala Moana Boulevard, Honolulu  
MAP PAGE 11

From **\$497\*\***

- ❖ Luxury meets convenience with full sized kitchens and spacious living areas
- ❖ Friday night hula and entertainment show and Sunday night entertainment
- ❖ Iconic oceanfront hotel with on-site dining, 2 pools, and more

**Location:** Set at the gateway to Waikiki overlooking the Ala Wai Yacht Marina. Distances: Beach 450m, Ala Moana Center 850m.

**Property Features:** Wi-Fi (extra charge), Pool (2), Sundeck, Restaurants (2), Bar, Gym, Guest laundry, 24 hour reception, Parking (extra charge), 1045 rooms.

**Room Features:** Air-conditioning, Balcony, Kitchen, Ironing facilities, Hair dryer, Safe.

**Max Capacity:** Luxury Junior Suite City View/Junior Suite Poolside View/Luxury Junior Suite Ocean View, Luxury 1 Bedroom Boulevard View – 4, Luxury 2 Bedroom City View/Luxury 2 Bedroom Oceanfront View – 6.

† Mandatory fee of USD38.93 applies per room per day, to be paid directly to the hotel. Refer to page 7 for details.



## OUTRIGGER WAIKIKI PARADISE HOTEL



Waikiki View Queen

150 Kaiulani Avenue, Honolulu  
MAP PAGE 11

From **\$546\*\***

- ❖ Newly renovated guest rooms, suites
- ❖ Spacious guest rooms and suites that include separate living area
- ❖ All new expansive pool deck with swimming pool, jacuzzi and fitness centre

**Location:** Located steps from Waikiki Beach and next door to Waikiki's International Market Place. Distances: Beach 250m, International Market Place 110m.

**Property Features:** Wi-Fi (extra charge), Pool, Restaurants (3), Café, Bar, Gym, Laundry/dry cleaning service, Parking (extra charge), Hair salon, 443 rooms.

**Room Features:** Air-conditioning, Mini fridge, Tea/coffee making facilities, 55" Smart TV with Google Chrome, Ironing facilities, Hair dryer, Safe.

**Max Capacity:** Waikiki View Queen – 3, Waikiki View 2 Doubles/1 Bedroom – 4, 2 Bedroom – 7.

† Mandatory fee of USD31.84 applies per room per day, to be paid directly to the hotel. Refer to page 7 for details.



## PRINCE WAIKIKI



Ocean View

100 Holomoana Street, Honolulu  
MAP PAGE 11

From **\$975\*\***

- ❖ Waikiki's only all ocean view hotel with spacious guestrooms and bathrooms
- ❖ Oceanfront Club Lounge available featuring all day delights and service
- ❖ Vibrant rooftop pool deck featuring adult-only infinity pool, cabanas and bar

**Location:** Situated at the gateway of Waikiki, near Honolulu's trendiest neighborhoods, Ala Moana Shopping Center, and Ala Moana Beach Park overlooking the Ala Wai Boat Harbor. Distances: Beaches 750m Ala Moana Shopping Center 750m.

**Property Features:** Wi-Fi (extra charge), Pool (saltwater), Spa, Poolside Cabanas (extra charge), Restaurants (4), Room service, Off property 27 hole golf course (extra charge), Art Tour, Exclusive Experience (extra charge may apply), 563 rooms.

**Room Features:** Ocean views with floor-to-ceiling windows, Air-conditioning, Tea/coffee making facilities, Ironing facilities, Bathrobes and slippers, Hair dryer, Safe.

**Max Capacity:** Ocean View – 4. Other room types also available.

† Mandatory fee of USD51.90 applies per room per day, to be paid directly to the hotel. Refer to page 7 for details.



SHERATON WAIKIKI BEACH RESORT



Mountain View

2255 Kalakaua Avenue, Honolulu  
MAP PAGE 11

From **\$836** \*\*

- ◆ Adults only oceanfront infinity pool and family friendly Helumoa Playground Pool with a waterslide
- ◆ Enjoy panoramic ocean views at RumFire restaurant

**Location:** Set on one of the best stretches of Waikiki Beach. Distances: Beachfront, Royal Hawaiian Center 150m.

**Property Features:** Wi-Fi (extra charge), Pools (2), Spa, Waterslide, Restaurants (2), Bars (2), Café, Room service, Gym, Guest laundry, Parking (extra charge), Leahi Club Lounge (extra charge), Boutique, 1636 rooms.

**Room Features:** Air-conditioning, Balcony, Tea/coffee making facilities, Cable TV, In-room movies (pay to view), Hair dryer, Ironing facilities, Safe.

**Max Capacity:** Mountain View/Partial Ocean View/Ocean Front/Deluxe Ocean Front – 4, Malia Ocean Front Suite – 5, Large Luxury Ocean/Kai Ocean Front Suite – 6.

◆ **Mandatory fee of USD41.38 applies per room per day, to be paid directly to the hotel. Refer to page 7 for details.**



WAIKIKI BEACH MARRIOTT RESORT & SPA



2552 Kalakaua Avenue, Honolulu  
MAP PAGE 11

From **\$949** \*\*

- ◆ Kuhio Beach Grill is the place for sunset views
- ◆ Array of services and Aveda treatments at the day spa
- ◆ Upgrade to an Ocean View or Ocean Front room for great views of Waikiki

**Location:** Just steps from the Pacific Ocean and close to dining options. Distances: Beach across road, International Market Place 650m.

**Property Features:** Wi-Fi (extra charge), Pool, Spa, Restaurants (5), Café, Day spa, Gym, Diving and watersports centre, Valet parking (extra charge), Resort shops, 1175 rooms.

**Room Features:** Air-conditioning, Balcony (except City View), Tea/coffee making facilities, Mini fridge, Ironing facilities, Hair dryer, Safe.

**Max Capacity:** City View/Waikiki City View/Ocean View/Ocean View Premium/Diamond Head Ocean View/Ocean Front – 4.

◆ **Mandatory fee of USD58.98 applies per room per day, to be paid directly to the hotel. Refer to page 7 for details.**

ASTON WAIKIKI BEACH TOWER



1 Bedroom Ocean View

2470 Kalakaua Avenue, Honolulu  
MAP PAGE 11

From **\$1281** \*\*

- ◆ Every suite is oceanfront with floor to ceiling windows
- ◆ Free hula, ukulele, lei-making, and yoga classes
- ◆ All-suite accommodation with fully equipped kitchens and washer/dryer

**Location:** Directly across from world-famous Waikiki Beach, near Diamond Head and the Honolulu Zoo. Distances: Beach 100m, International Market Place 600m

**Property Features:** Poolside cabanas, Pool, Spa, Lobby market, Gym, Yoga room, Guest laundry, 24 hour reception, Parking, 140 rooms.

**Room Features:** Ocean views, Air-conditioning, Tea/coffee making facilities, Kitchen, Ironing facilities, Hair dryer, Safe.

**Max Capacity:** 1 Bedroom Ocean View – 4, 2 Bedroom Partial Ocean View/2 Bedroom Ocean View – 6. Other room types also available.

◆ **Mandatory fee of USD51.73 applies per room per day, to be paid directly to the hotel. Refer to page 7 for details.**



HILTON HAWAIIAN VILLAGE WAIKIKI BEACH RESORT



Resort View

2005 Kalia Road, Honolulu  
MAP PAGE 11

From **\$910** \*\*

- ◆ Multiple dining options with over 18 restaurants and bars
- ◆ Five swimming pools, one with a waterslide, and a large saltwater lagoon
- ◆ Friday night fireworks show

**Location:** Within walking distance to shops, Kalakaua Avenue and Waikiki Beach Walk. Distances: Beachfront, Ala Moana Center 1.1km.

**Property Features:** Wi-Fi (extra charge), Friday night fireworks, Waikiki Starlight Luau, Pools (5), Restaurants and bars (20), Day spa, Gym, Shops (90), 2860 rooms.

**Room Features:** Air-conditioning, Balcony, Cable TV, Tea/coffee making facilities, Ironing facilities, Hair dryer, Safe.

**Max Capacity:** Diamond Head Tower: Resort View/Partial Ocean View/Ocean View – 4, Rainbow Tower: Marina Ocean View/Ocean Front – 4. Other room types also available.

◆ **Mandatory fee of USD58.06 applies per room per day, to be paid directly to the hotel. Refer to page 7 for details.**



# O'AHU ACCOMMODATION

## HYATT REGENCY WAIKIKI BEACH RESORT & SPA



Ocean Front King

2424 Kalakaua Avenue, Honolulu  
MAP PAGE 11

From **\$472\*\***

- ❖ Highly acclaimed Na Ho'ola Spa
- ❖ More than 60 boutiques within the resort
- ❖ Pool deck with ocean views and cabanas

**Location:** Directly on Kalakaua Avenue, across the road from Waikiki Beach. Distances: Beach 550m, International Market Place 250m.

**Property Features:** Cultural activities, Farmers Market, Pool, Restaurants (8), Bar, Gym, Day spa, Guest laundry, Parking (extra charge), Resort shops, 1230 rooms.

**Room Features:** Air-conditioning, Balcony, Tea/coffee making facilities, Cable TV, Docking station, Ironing facilities, Hair dryer, Safe.

**Max Capacity:** Waikiki City View King/Ocean Front King – 3, Waikiki City View Queen/Ocean View/Ocean Front Queen – 4.

**† Mandatory fee of USD57.80 applies per room per day, to be paid directly to the hotel. Refer to page 7 for details.**



## OUTRIGGER REEF WAIKIKI BEACH RESORT



Resort View

2169 Kalia Road, Honolulu  
MAP PAGE 11

From **\$760\*\***

- ❖ One of only eight beachfront properties in Waikiki
- ❖ Enjoy Hawaiian music nightly at Kani Ka Pila Grille
- ❖ Voyager 47 Club Lounge includes daily breakfast and evening appetisers

**Location:** On Waikiki Beach and close to the shopping and dining options of Waikiki Beach Walk. Distances: Beachfront, Royal Hawaiian Center 300m.

**Property Features:** Wi-Fi (extra charge), Pool, Spas (3), Private cabana (extra charge), Restaurants (2), Café, Bars (2), Day spa, Gym, Voyager 47 Club Lounge (Club rooms and Club suites), Laundry/dry cleaning service, Valet parking (extra charge), 658 rooms.

**Room Features:** Air-conditioning, Balcony (except Standard), Refrigerator, Tea/coffee making facilities, Smart TV, Bluetooth speakers, USB charging station.

**Max Capacity:** Standard/Resort View/Partial Ocean King/Partial Ocean Double/Ocean King – 4. Other rooms, Club rooms and Club suites also available.

**† Mandatory fee of USD53.06 applies per room per day, to be paid directly to the hotel. Refer to page 7 for details.**



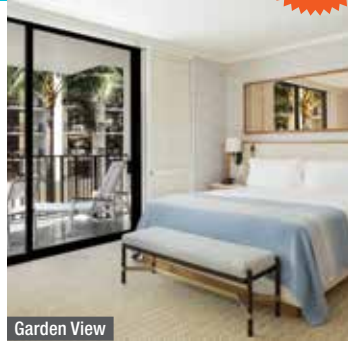
Voyager 47 Club Lounge

**\* FROM PRICES ARE A GUIDE ONLY**, subject to change and availability and are in Australian Dollars. Prices are per room per night for 2 people, unless otherwise specified and based on the lowest room category for travel in low season. For full terms and conditions, refer to the Booking Conditions on the inside back cover of this brochure.

HALEKULANI



NO  
RESORT  
FEE



2199 Kalia Road, Honolulu  
MAP PAGE 11

From **\$1443\***

- ◆ A beachfront location with views of Diamond Head
- ◆ Multiple dining options including the highly acclaimed La Mer restaurant
- ◆ Free surfing or stand-up paddle board demonstration daily

**Location:** A prime location on five oceanfront acres. Distances: Beachfront, Royal Hawaiian Center 250m.

**Property Features:** Pool, Restaurants (3), Bars (3), Day spa, Gym, Laundry/dry cleaning service, Lift, 24 hour reception, Valet parking (extra charge), Resort shop, 453 rooms.

**Room Features:** Air-conditioning, Balcony, Cable TV, DVD player, Ironing facilities, Bathrobes, Hair dryer, Safe.

**Max Capacity:** Garden View/Partial Ocean View/Ocean View/Ocean Front/Diamond Head Ocean Front – 3.



MOANA SURFRIDER, A WESTIN RESORT & SPA



2365 Kalakaua Avenue, Honolulu  
MAP PAGE 11

From **\$928\*\***

- ◆ Beachfront property with sun lounges on the beach
- ◆ Historic hotel dating back to 1901 with classic Victorian architecture
- ◆ Oceanfront Moana Lani Spa

**Location:** In the heart of Waikiki, directly on Waikiki Beach and surrounded by shopping and dining options. Distances: Beachfront, International Market Place 110m.

**Property Features:** Hawaiian activities, Pool, Private beach area, Restaurants (5), Bar, Room service, Moana Lani Spa, Gym, Beach club (extra charge), Laundry/dry cleaning service, 24 hour reception, Parking (extra charge), 791 rooms.

**Room Features:** Air-conditioning, Balcony (except Diamond City, Historic Banyan), Tea/coffee making facilities, In-room movies (pay to view), Ironing facilities, Hair dryer, Safe.

**Max Capacity:** Historic Banyan/Diamond City/Historic Banyan Ocean – 2, Tower City/Diamond Ocean Front/Tower Ocean Front Suite – 4.

◆ **Mandatory fee of USD49.54 applies per room per day, to be paid directly to the hotel. Refer to page 7 for details.**



THE RITZ-CARLTON RESIDENCES



NO  
RESORT  
FEE



383 Kalaimoku Street, Honolulu  
MAP PAGE 11

From **\$1382\***

- ◆ Acclaimed dining options including Dean & DeLuca and Sushi Sho
- ◆ Infinity pool on the eighth floor is the highest in Waikiki
- ◆ All residences feature ocean views, kitchens, washing machines and dryers

**Location:** Close to Waikiki Beach and fronted by Luxury Row shopping. Distances: Beach 600m, Royal Hawaiian Center 350m.

**Property Features:** Pool (infinity), Cabanas (extra charge), Sundeck, Restaurants (3), Bar, Café, 24 hour room service, The Ritz-Carlton Spa, Massage facilities, Steam room, Sauna, Laundry/dry cleaning service, Non smoking, 24 hour reception, 552 rooms.

**Room Features:** Ocean views, Balcony, Air-conditioning, Limited cooking facilities (Studios), Kitchen with microwave and dishwasher (except Studios), Tea/coffee making facilities, Bathrobes, Hair dryer, Ironing facilities, Washer/dryer.

**Max Capacity:** Ocean View Studio/Deluxe Ocean View Studio/1 Bedroom Deluxe Ocean View/1 Bedroom Superior Ocean View – 3, 2 Bedroom Deluxe Ocean View – 5, 3 Bedroom Premier Ocean View – 7. Other room types also available.



THE ROYAL HAWAIIAN, A LUXURY COLLECTION RESORT



2259 Kalakaua Avenue, Honolulu  
MAP PAGE 11

From **\$862\*\***

- ◆ Iconic hotel known as the 'Pink Palace of the Pacific'
- ◆ Absolute beachfront location with private cabanas
- ◆ Stay in the exclusive Mailani Tower for private check-in and club lounge access

**Location:** With an oceanfront location, this resort provides great access to Waikiki's range of shopping, dining and activities. Distances: Beachfront, Royal Hawaiian Center 160m.

**Property Features:** Wi-Fi (extra charge), Pools (2), Royal Beach Club, Restaurants (2), Bar, Café, 24 hour room service, Day spa, Gym, Laundry/dry cleaning service, Lifts, 24 hour reception, Parking (extra charge), 528 rooms.

**Room Features:** Air-conditioning, Balcony (Mailani Tower rooms), Tea/coffee making facilities, Cable TV, Docking station, Ironing facilities, Hair dryer, Safe.

**Max Capacity:** Historic/Mailani Tower Ocean Front – 4, Historic Garden Junior Suite – 3. Other room types also available.

◆ **Mandatory fee of USD49.54 applies per room per day, to be paid directly to the hotel. Refer to page 7 for details.**



\*FROM PRICES ARE A GUIDE ONLY, subject to change and availability and are in Australian Dollars. Prices are per room per night for 2 people, unless otherwise specified and based on the lowest room category for travel in low season. For full terms and conditions, refer to the Booking Conditions on the inside back cover of this brochure.

# O'AHU ACCOMMODATION

## KA LA'I WAIKIKI BEACH, LXR HOTELS & RESORTS



223 Saratoga Road, Honolulu  
MAP PAGE 11

From **\$998\*\***

- ❖ Great for families or friends with all rooms featuring fully equipped kitchen facilities and some accommodating up to eight guests
- ❖ Sixth floor infinity pool with expansive sun deck and 5 star luxury service
- ❖ Plush loungers surround the resort's infinity-edge lap pool and heated whirlpool
- ❖ Savor city and ocean views from a private treatment room inside Spa Ka La'i

**Location:** In the heart of Waikiki's vibrant entertainment scene, exclusive boutiques, world-class restaurants and two minute walk from the iconic Waikiki Beach. Distances: Beach 100m, Royal Hawaiian Center 400m.

**Property Features:** Pool (infinity), Spa, Restaurants (3), Bar, Café, Poolside dining, 24 hour room service, Day spa, Library, Gym, 462 rooms.

**Room Features:** Air-conditioning, Balcony (except Superior), Limited cooking facilities with microwave (Superior & Deluxe), Kitchen (1, 2, 3 Bedrooms), Tea/coffee making facilities, DVD player, Docking station, In-room movies (pay to view), Ironing facilities, Washer/dryer (Deluxe, 1, 2, 3 Bedrooms), Bathrobes, Hair dryer, Safe.

**Max Capacity:** Superior City View/Superior Partial Ocean View/Superior Ocean View – 2. Deluxe 1 Bedroom City View Suite – 4. Other room types also available.

† Mandatory fee of USD47.18 applies per room per day, to be paid directly to the hotel. Refer to page 7 for details.



Deluxe 1 Bedroom City View Suite



Superior City View



\*FROM PRICES ARE A GUIDE ONLY, subject to change and availability and are in Australian Dollars. Prices are per room per night for 2 people, unless otherwise specified and based on the lowest room category for travel in low season. For full terms and conditions, refer to the Booking Conditions on the inside back cover of this brochure.

## COURTYARD BY MARRIOTT O'AHU NORTH SHORE



NO  
RESORT  
FEE



Standard Queen Queen

55-400 Kamehameha Highway, Laie  
MAP PAGE 11

From **\$750\***

- ❖ Oversized and connecting rooms are great for families
- ❖ Complimentary on-site cultural and recreational activities
- ❖ No resort fee or extra person charge

**Location:** Steps to the beach, adjacent to Polynesian Cultural Center. Distances: Beach 20m, Kahuku town centre 5.5km, Waikiki 55km.

**Property Features:** Pool, Restaurant, Gym, Beach activity rental centre, Cultural classes, Alcohol-free zones, Guest laundry, Non smoking, Parking (extra charge), 144 rooms.

**Room Features:** Air-conditioning, Tea/coffee making facilities, Mini fridge, Microwave, Smart TV, Ironing facilities, Hair dryer.

**Max Capacity:** Standard Queen Queen – 4, Deluxe – 6.



## THE RITZ-CARLTON O'AHU, TURTLE BAY



Resort View King

57-091 Kamehameha Highway, Kahuku  
MAP PAGE 11

From **\$1667\*\***

- ❖ Situated on eight kilometres of unspoiled coastline
- ❖ Kids will enjoy the 25 metre waterslide and children's pool
- ❖ Spa with massage rooms overlooking the ocean

**Location:** Occupying a beachfront location on O'ahu's North Shore and only a 55 minute drive from Honolulu. Distances: Beachfront, Kahuku town centre 6km, Waikiki 70km.

**Property Features:** Wi-Fi (extra charge), Pools (2), Restaurants (5), Bars (2), Day Spa, Gym, Tennis court, Laundry/dry cleaning service, Valet parking (extra charge), 452 rooms.

**Room Features:** Air-conditioning, Kitchen (Ocean Villa 3 Bedroom), Tea/coffee making facilities, Ironing facilities, Washer/dryer (Ocean Villa 3 Bedroom), Hair dryer.

**Max Capacity:** Resort View King/Ocean View King – 3, Resort View 2 Queens/Ocean View 2 Queens/Ocean Family Suite/Ocean Beachfront Cottage 2 Queens – 4, Ocean Beachfront King Cottage – 2, Ocean Villa 3 Bedroom – 8.

\* Mandatory fee of USD61.34 applies per room per day, to be paid directly to the hotel. Refer to page 7 for details.



# MAUI

Maui is known for its pristine beaches, lush rainforests, spectacular volcanic craters and charming historic towns. Beautiful Ka'anapali and Wailea beaches are the perfect places to swim and enjoy the warm Hawaiian sun.

## SEE

- Look out for Humpback whales off the west and south coasts between December and May
- Watch the sunrise from the summit of the dormant volcano, Haleakala

## DO

- Soak up the sun at Makena Beach
- Snorkel at Black Rock, located at the northern end of Ka'anapali Beach

## EAT & DRINK

- Try a locally brewed beer at Maui Brewing Co. in Lahaina
- Travel upcountry to Kula for a gourmet farm-to-plate experience at O'o Farm
- For toes-in-the-sand dining, visit Hula Grill

## WHAT'S ON

**Maui Marathon**  
27 April



Oneloa Beach



REF.	APARTMENTS	PAGE
1	Aston Ka'anapali Shores	25
1	Aston Maui Ka'anapali Villas	26
2	OUTRIGGER Honua Kai Resort & Spa	26
2	Royal Kahana Maui by OUTRIGGER	25

REF.	HOTELS	PAGE
3	Andaz Maui at Wailea Resort	26
3	Fairmont Kea Lani Maui	27
1	Hyatt Regency Maui Resort & Spa	27
1	OUTRIGGER Ka'anapali Beach Resort	25
1	Sheraton Maui Resort & Spa	26
1	The Westin Maui Resort & Spa	27



## AIRPORT TRANSFERS

Get your holiday off to a great start with a door-to-door shared coach transfer service.

Convenient transfers are available 24 hours a day, 7 days a week from Kahului Airport to Ka'anapali, Lahaina and Wailea accommodation. Sit back, relax and be transferred in air-conditioned comfort.

Approximate travel distance from Kahului Airport to Ka'anapali is 45 kilometres, Lahaina 40 kilometres and Wailea 30 kilometres.

Coach Transfer Per Person	Adult/Child
Wailea accommodation	\$90*^A
Lahaina accommodation	\$111*^A
Ka'anapali accommodation	\$130*^A
Private Transfer Per Vehicle	1 to 5 People
Wailea accommodation	\$405*^A
Lahaina accommodation	\$453*^A
Ka'anapali accommodation	\$453*^A

**^A Price based on one way to/from Kahului Airport. Children 0 to 3 yrs are free when they do not occupy a seat.**



## HEAVENLY HANA

Travel along the famous Hana Coast, weaving through the lush tropical rainforest, there are more than 600 curves and 59 one-lane bridges with scenic vistas, cascading waterfalls, and stunning coastal scenery. Visit Keanae Valley Lookout for magnificent views of Maui and the picturesque Wai'anapanapa State Park. See the powerful waves of Ho'okipa Beach, famous for its surfing competitions. It's more about the journey rather than the destination on the Road to Hana, so sit back, relax and enjoy the view.

### Includes:

- Picnic lunch
- Experienced driver/guide with expert commentary
- Return transfers from Maui accommodation

**Duration:** 10 hours

**Departs:** Tue, Fri and Sun from Maui at 7am

	Adult	Child 4-11 yrs
Full Day Tour	\$393*	\$277*



## WATERFALLS OF WEST MAUI AND MOLOKA'I

The West Maui and Moloka'i helicopter tour takes you on an aerial adventure into some of the most remote and beautiful places in the world. Soar above 88 miles of untouched coastline, where towering waterfalls plunge from sea cliffs into the turquoise sea on Moloka'i's north shore. Explore the lush, meandering valleys set deep in the rainforest of the West Maui Mountains, with their legendary knife-edged, mist-covered peaks.

Your expert pilot will guide you on an epic adventure full of information on Maui's history, culture and ancient island traditions. Take to the skies to experience the stunning landscapes of West Maui and Moloka'i.

### Includes:

- 50 minute helicopter tour

**Duration:** 50 minutes

**Departs:** Various departures daily

	Adult/Child
Helicopter Tour	\$673*

\* FROM PRICES ARE A GUIDE ONLY, subject to change and availability and are in Australian Dollars. Prices are per person, unless otherwise specified and based on travel in low season. For full terms and conditions, refer to the Booking Conditions on the inside back cover of this brochure.



**OUTRIGGER KA'ANAPALI BEACH RESORT**



Premium Garden View

2525 Ka'anapali Parkway, Ka'anapali  
MAP PAGE 24

From **\$684** \*^+

- ❖ Free cultural activities daily including lei making, hula and ukulele lessons
- ❖ Maui Brewing Co, a beloved local brand with a deep island heritage is the primary beachfront restaurant

**Location:** Set along Maui's renowned Ka'anapali Beach and five kilometres from the township of Lahaina. Distances: Beachfront, Whalers Village shopping centre 350m.

**Property Features:** Cultural activities, Pool, Courtyard, Restaurants (2), Grab and go outlet, Ocean Activities Center, Laundry/dry cleaning service, 24 hour reception, Parking (extra charge), 432 rooms.

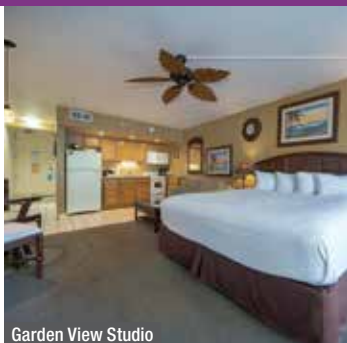
**Room Features:** Air-conditioning, Fan, Balcony, Tea/coffee making facilities, Ironing facilities, Hair dryer, Safe (extra charge).

**Max Capacity:** Courtyard View/Ocean View/Ocean Front/Premium Garden View/Premium Partial Ocean View/Premium Ocean View – 4. Other room types also available.

^Minimum 2 night stay applies. +Mandatory fee of USD41.28 applies per room per day, to be paid directly to the hotel. Refer to page 7 for details.



**ROYAL KAHANA MAUI BY OUTRIGGER**



Garden View Studio

4365 Lower Honoapiilani Road, Lahaina  
MAP PAGE 24

From **\$810** \*^+

- ❖ Spacious units are perfect for families and long stays with fully equipped kitchens and a washer/dryer
- ❖ Oceanfront vacation condo resort

**Location:** A perfect oceanfront location, between the resort areas of Ka'anapali and Kapalua. Distances: Oceanfront, Whalers Village shopping centre 300m.

**Property Features:** Pool, Sundeck, Gym, Parking (extra charge), 236 rooms.

**Room Features:** Air-conditioning, Balcony, Kitchen with microwave, Tea/coffee making facilities, Cable TV, Ironing facilities, Washer/dryer, Hair dryer, Safe.

**Max Capacity:** Garden View Studio/Ocean View Studio – 3, 1 Bedroom Garden View/1 Bedroom Ocean View/1 Bedroom Ocean Front – 4, 2 Bedroom Garden View/2 Bedroom Ocean View/2 Bedroom Ocean Front – 6.

^Minimum 2 night stay applies. Price includes a cleaning fee and a damage protection charge. Refer to page 7 for details.



**ASTON KA'ANAPALI SHORES**



3445 Lower Honoapiilani Road, Ka'anapali  
MAP PAGE 24

From **\$666** \*^+

- ❖ All suites feature full kitchens, multi-room suites include washer/dryer units
- ❖ Complimentary hula and ukulele lessons, weekly craft fair, and live music
- ❖ Family-friendly oceanfront resort

**Location:** An oceanfront location on Ka'anapali Beach in West Maui. Distances: Beachfront, Whalers Village shopping centre 4.4km.

**Property Features:** Wi-Fi (extra charge), Pools (2), Spas (2), Restaurant, Bar, Day spa, Gym (extra charge), Tennis courts (2), 463 rooms.

**Room Features:** Air-conditioning, Balcony (except Hotel), Kitchen with microwave and dishwasher (except Hotel), Tea/coffee making facilities, TV, Washer/dryer (1 and 2 Bedrooms), Hair dryer, Safe.

**Max Capacity:** Hotel – 2, Studio with Kitchen – 3, 1 Bedroom Standard – 4, 2 Bedroom 2 Bathroom Garden Suite – 6. Other room types also available.

^Minimum 2 night stay applies. +Mandatory fee of USD29.49 applies per room per day, to be paid directly to the hotel. Refer to page 7 for details.



\*FROM PRICES ARE A GUIDE ONLY, subject to change and availability and are in Australian Dollars. Prices are per room per night for 2 people, unless otherwise specified and based on the lowest room category for travel in low season. For full terms and conditions, refer to the Booking Conditions on the inside back cover of this brochure.

# MAUI ACCOMMODATION

## ASTON MAUI KA'ANAPALI VILLAS



45 Kai Ala Drive, Lahaina  
MAP PAGE 24

From **\$657\*\***

- ❖ Situated on 11 acres of tropical gardens and sandy beachfront
- ❖ On-site pools with ocean and garden views
- ❖ Spacious accommodations including suites with full kitchens

**Location:** Rests amid 11 acres of lushly landscaped exotic tropical gardens in one of Ka'anapali's finest beachfront setting. Distances: Beachfront, Whalers Village shopping centre 2.6km.

**Property Features:** Pools (2), Spas (2), Restaurant, Gym, Day spa, Parking, 260 rooms.

**Room Features:** Air-conditioning, Tea/coffee making facilities, Mini fridge, Kitchen (except Hotel Room), Ironing facilities, Hair dryer, Safe.

**Max Capacity:** Hotel – 2, Studio Garden View – 3, 1 Bedroom Garden View – 4, 2 Bedroom Suite Deluxe – 6. Other room types also available.

**† Mandatory fee of USD41.28 applies per room per day plus a damage protection charge of USD47.17 applies per room per stay, to be paid directly to the hotel. Refer to page 7 for details.**



## OUTRIGGER HONUVA KAI RESORT & SPA



130 Kai Malina Parkway, Lahaina  
MAP PAGE 24

From **\$1486\*^†**

- ❖ Great for families or large groups with rooms catering for up to eight guests
- ❖ 3 acre aquatic playground with 5 pools, 5 jet spas and waterslide
- ❖ On-site restaurant catering for breakfast, lunch and dinner

**Location:** Spread across 38 beachfront acres, this property is set between the Pacific Ocean and the West Maui Mountains. Distances: Beachfront, Whalers Village shopping centre 3.7km.

**Property Features:** Pools (5), Spas (5), Waterslide, Restaurant, Bar, Barbecue area, Day spa, Gym, 600 rooms.

**Room Features:** Large balcony, Kitchen with microwave and dishwasher, Ironing facilities, Washer/dryer.

**Max Capacity:** Studio Resort View/Studio Partial Ocean/Studio Ocean/1 Bedroom Suite – 4, 2 Bedroom – 6, 3 Bedroom – 8.

**^Price includes a damage protection charge. † Mandatory fee of USD41.28 applies per room per day, to be paid directly to the hotel. Refer to page 7 for details.**



## SHERATON MAUI RESORT & SPA



2605 Ka'anapali Parkway, Lahaina  
MAP PAGE 24

From **\$1223\*\***

- ❖ Iconic cliff diving ceremony at sunset daily
- ❖ Large lagoon pool with a lazy river and a waterslide
- ❖ Island-inspired treatments at The Spa at Black Rock

**Location:** On 23 oceanfront acres along Ka'anapali Beach. Distances: Beachfront, Whalers Village shopping centre 800m.

**Property Features:** Pool, Spa, Restaurants (5), Bars (3), Gift shop, Room service, Day spa, Gym, Tennis courts, (3), Laundry/dry cleaning service, Parking (extra charge), 510 rooms.

**Room Features:** Air-conditioning, Balcony, Tea/coffee making facilities, In-room movies (pay to view), Ironing facilities, Hair dryer, Safe.

**Max Capacity:** Partial Ocean View – 3, Resort View/Ocean View/Deluxe Ocean View/Ocean Front/Deluxe Ocean Front//1 Bedroom Suite – 4, Ohana Suite – 5.

**† Mandatory fee of USD45.60 applies per room per day, to be paid directly to the hotel. Refer to page 7 for details.**



## ANDAZ MAUI AT WALEA RESORT



3550 Wailea Alanui Drive, Wailea  
MAP PAGE 24

From **\$1619\*\***

- ❖ Beachfront property with direct access to Mokapu Beach
- ❖ Ka'ana Kitchen offers the only Chef's Table Experience in Wailea
- ❖ Feast at Mokapu, the most exclusive luxury lu'au experience on Maui

**Location:** Located in the luxury resort community of Wailea, on the crescent-shaped shores of Maui. Distances: Beachfront, Shops at Wailea 1km.

**Property Features:** Pools (5), Restaurants (5), 24 hour Mokapu Market, Room service, 'Awili Spa and Salon, Gym, Valet Parking (extra charge), 320 rooms.

**Room Features:** Air-conditioning, Private lanai, Nespresso coffee maker, Mini bar (free – replenished daily), Ironing facilities, Hair dryer, Safe.

**Max Capacity:** 1 King Bed/1 King Bed Ocean View – 2, 2 Queen Beds/2 Queen Beds Ocean View – 4. Other rooms types also available.

**† Mandatory fee of USD58.99 applies per room per day, to be paid directly to the hotel. Refer to page 7 for details.**



**FAIRMONT KEA LANI MAUI**  
◆◆◆◆



Fairmont Suite

4100 Wailea Alanui Drive, Wailea  
MAP PAGE 24

From **\$1252\*\***

- ◆ Kids will love the 42 metre waterslide and the two activity pools
- ◆ Range of Hawaiian and cultural activities on-site
- ◆ Fairmont Spa offers Hawaiian wellness traditions

**Location:** On the golden sands of Wailea's Polo Beach Park. Distances: Beachfront, The Shops at Wailea 1.5km.

**Property Features:** Cultural activities, Pools (3 – including 2 family, 1 adults only), Restaurants (4), Bars (3), Kids club 5-12 years (free), Willow Stream Spa, Gym, Valet parking (extra charge), 450 rooms.

**Room Features:** Air-conditioning, Balcony, Tea/coffee making facilities, Ironing facilities, Hair dryer, Safe.

**Max Capacity:** Fairmont Suite/Fairmont Garden View Suite/Mountain Side Suite/Partial Ocean View Suite/Ocean View Suite/Deluxe Ocean View Suite – 4.

† Mandatory fee of USD58.96 applies per room per day, to be paid directly to the hotel. Refer to page 7 for details.



**THE WESTIN MAUI RESORT & SPA**  
◆◆◆◆



Mountain View

2365 Ka'anapali Parkway, Lahaina  
MAP PAGE 24

From **\$1302\*\***

- ◆ Authentic Wailele Luau show held Sunday, Tuesday and Thursday year round
- ◆ Famous Heavenly Spa by Westin™
- ◆ Ocean view from all dining outlets

**Location:** Surrounded by lush gardens with waterfalls, the 12 acre resort is set on the Ka'anapali beachfront. Distances: Beachfront, Whalers Village shopping centre 350m.

**Property Features:** Wi-Fi (extra charge), Pools (5), Spa, Restaurants and bars (5), Wailele Luau, 24 hour room service, Westin Family Kids Club 5-12 years (extra charge), Heavenly Spa by Westin™ spa, 24 hour fitness centre, 743 rooms.

**Room Features:** Air-conditioning, Balcony, Cable TV, In-room movies (pay to view), Tea/coffee making facilities, Ironing facilities, Hair dryer.

**Max Capacity:** Mountain View/Garden View/Ocean View/Superior Ocean View/Oceanfront/Executive Suite – 4. Other room types also available.

† Mandatory fee of USD53.96 applies per room per day, to be paid directly to the hotel. Refer to page 7 for details.



**HYATT REGENCY MAUI RESORT & SPA**  
◆◆◆◆



Oceanfront

200 Nohea Kai Drive, Ka'anapali  
MAP PAGE 24

From **\$1352\*\***

- ◆ The Spa Maui, Maui's only oceanfront spa
- ◆ Drums of the Pacific Luau show performed on-site
- ◆ Six-free form pools with waterslides and a rope bridge

**Location:** On Maui's west coast occupying 40 oceanfront acres on Ka'anapali Beach. Distances: Beachfront, Whalers Village shopping centre 1km.

**Property Features:** Pools (6), Restaurants (5), Bar, Day spa, Gym, Parking (extra charge), 810 rooms.

**Room Features:** Air-conditioning, Balcony, Tea/coffee making facilities, Cable TV, Docking station, Ironing facilities.

**Max Capacity:** King Bed/Queen and Queen Bed/Golf Mountain View/Partial Ocean View/Partial Ocean View Lahaina Tower/Ocean View/Ocean View Lahaina Tower/Oceanfront/Partial Ocean View Club Access/Oceanfront Club Access – 4.

† Mandatory fee of USD52.84 applies per room per day, to be paid directly to the hotel. Refer to page 7 for details.



\*FROM PRICES ARE A GUIDE ONLY, subject to change and availability and are in Australian Dollars. Prices are per room per night for 2 people, unless otherwise specified and based on the lowest room category for travel in low season. For full terms and conditions, refer to the Booking Conditions on the inside back cover of this brochure.

# ISLAND OF HAWAI'I

The best kept secret of the Hawaiian Islands is the Island of Hawai'i. Visit the Kona and Kohala Coasts for their white sand beaches and be sure to snorkel or dive in the clear waters. Head to Hawai'i Volcanoes National Park to see steam vents, rainforests and deserts.

## SEE

- Look out for whales along the Kohala Coast between December and May

## DO

- Visit Punalu'u Black Sand Beach
- Stargaze on Maunakea, the tallest sea mountain in the world
- Learn about Hawaiian culture at Pu'uuhonua O Honaunau National Historical Park
- Experience a night snorkel with manta rays on the Kona and Kohala Coasts

## EAT & DRINK

- Try the famous Kona coffee at Kona Coffee & Tea café

## WHAT'S ON

### Merrie Monarch Festival

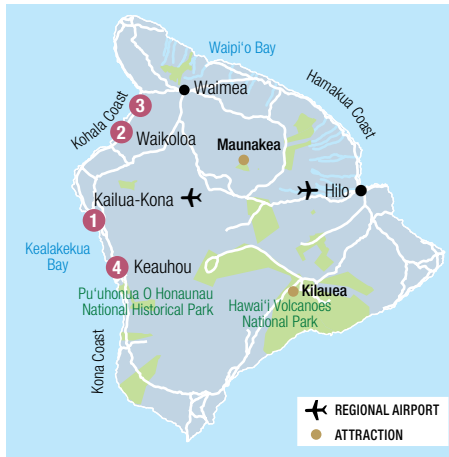
20 to 26 April

### Kona Coffee Cultural Festival

November (dates to be confirmed)



Anaehoomalu Bay



REF.	APARTMENTS	PAGE
1	Aston Kona by the Sea	29
2	Fairway Villas Waikoloa by OUTRIGGER	29

REF.	HOTELS	PAGE
3	Fairmont Orchid	30
2	Hilton Waikoloa Village	30
4	OUTRIGGER Kona Resort & Spa	30
1	Royal Kona Resort	29
2	Waikoloa Beach Marriott Resort & Spa	29



## PRIVATE AIRPORT TRANSFERS

Get your holiday off to a great start with a door-to-door private transfer service. Convenient transfers are available 24 hours a day, 7 days a week from Kailua-Kona Airport. Sit back, relax and be transferred in air-conditioned comfort. Approximate travel distance from Kailua-Kona Airport to Waikoloa is 40 kilometres.

	1 to 14 People
Kailua-Kona accommodation	\$309*^
Waikoloa accommodation	\$405*^

^Price based on per vehicle one way from Kailua-Kona Airport. Children 0 to 3 yrs are free when they do not occupy a seat.



## BIG ISLAND HIGHLIGHTS

See more on this complete island excursion created for those wishing to see as much of Hawai'i Island as possible in one day. Travel south into Kona coffee country and visit Bay View Farm, a working 24 acre coffee farm. The adventure continues through the South Kona and Ka'u Districts with stunning views alternating between stark lava flows and Hawaiian dry forest. Stop briefly at picturesque Punalu'u Black Sand Beach and travel to Hawai'i Volcanoes National Park.

### Includes:

- Visit to Hawai'i Volcanoes National Park
- Scenic viewing of stark lava flows and Hawaiian dry forest • Kona coffee tasting
- Picnic lunch • Dinner

**Duration:** 11 hours

**Departs:** Thu to Mon from Waikoloa at 7am, Kona at 8am

	Adult	Child 5-11 yrs
Full Day Tour	\$492*	\$474*



## DELUXE VOLCANOES EXPERIENCE

Take in expansive views of the Kona coastline on your way to sample some of the island's finest homegrown coffees and locally-made Hawaiian sweetbreads and malasadas. Dig your toes in a black sand beach before the tour climbs 4,000 feet to visit Hawai'i Volcanoes National Park where you'll see some of the world's most unique geological landscapes. End the day with a three course dinner, then head back to Kona over Saddle Road under the stars of the Milky Way.

### Includes:

- Guided tour of Hawai'i Volcanoes National Park
- Lava lake viewing at night (if volcano is erupting)
- Picnic lunch
- Three course dinner at Historic Kilauea Lodge

**Duration:** 11 hours

**Departs:** From Waikoloa at 9:30am, Kona at 10:30am

	Adult	Child 5-11 yrs
Full Day Tour	\$545*	\$527*

\*FROM PRICES ARE A GUIDE ONLY, subject to change and availability and are in Australian Dollars. Prices are per person, unless otherwise specified and based on travel in low season. For full terms and conditions, refer to the Booking Conditions on the inside back cover of this brochure.

## ASTON KONA BY THE SEA



1 Bedroom Partial Ocean View

75-6106 Ali'i Drive, Kailua-Kona  
MAP PAGE 28

From **\$797\*\***

- ❖ Family-friendly apartment-style accommodation featuring full kitchen and washer/dryer
- ❖ Each apartment has a balcony with full or partial ocean views

**Location:** Oceanfront resort fronting the rocky shoreline in Kailua-Kona. Distances: Oceanfront, Town centre 4.5km.

**Property Features:** Wi-Fi (extra charge), Pool, Spa, Barbecue area, Parking (free), 86 rooms.

**Room Features:** Air-conditioning, Balcony, Tea/coffee making facilities, Kitchen with microwave and dishwasher, Cable TV, DVD player, Ironing facilities, Washer/dryer, Hair dryer.

**Max Capacity:** 1 Bedroom Partial Ocean View/1 Bedroom Ocean View/1 Bedroom Ocean Front – 4, 2 Bedroom Ocean View/2 Bedroom Ocean Front – 6.

**\* Mandatory fee of USD27.13 applies per room per day plus a cleaning fee from USD117.96 applies per room per stay, to be paid directly to the hotel. Refer to page 7 for details.**

## FAIRWAY VILLAS WAIKOLOA BY OUTRIGGER



69-250 Waikoloa Beach Drive, Waikoloa  
MAP PAGE 28

From **\$647\*\*^**

- ❖ Great for self-catering with a fully equipped kitchen in each apartment and a barbecue area on-site
- ❖ Infinity pool and lava-rock whirlpool spa

**Location:** Within a gated community on the Kohala Coast, surrounded by the Waikoloa Beach Golf Course. Distances: Beach 1.4km, Town centre 700m.

**Property Features:** Pool, Spa, Barbecue area, Gym, Parking (free), 58 rooms.

**Room Features:** Air-conditioning, Balcony, Kitchen with microwave and dishwasher, Cable TV, Washer/dryer, Ironing facilities, Hair dryer.

**Max Capacity:** 1 Bedroom Golf View – 3, 2 Bedroom Golf View – 6, 2 Bedroom Golf View with Loft – 7, 3 Bedroom Golf View – 8.

**^ Minimum 4 night stay applies. Price includes a cleaning fee and a damage protection charge. Refer to page 7 for details.**

## ROYAL KONA RESORT



75-5852 Ali'i Drive, Kailua-Kona  
MAP PAGE 28

From **\$398\*\***

- ❖ Voyagers of the Pacific Luau evening show on-site
- ❖ Don's Mai Tai Bar is the place for a Mai Tai with an ocean view
- ❖ Explore the ocean without leaving the resort in the saltwater lagoon

**Location:** Set oceanfront, within easy walking distance of the restaurants, shops and activities in Kona town. Distances: Oceanfront, Town centre 1.4km.

**Property Features:** Wi-Fi (extra charge), Luau, Restaurant, Bar, Pool, Saltwater swimming lagoon, Day spa, Massage facilities, Gym, Tennis courts (4), Guest laundry, Non smoking, 436 rooms.

**Room Features:** Air-conditioning, Balcony, Mini-refrigerator and wet bar, Tea/coffee making facilities, Cable TV, In-room movies (pay to view), Ironing facilities, Hair dryer, Safe.

**Max Capacity:** Standard/Partial Ocean View/Ocean View/Ocean Front View/Ocean Front Corner King – 4. Other room types also available.

**\* Mandatory fee of USD29.49 applies per room per day, to be paid directly to the hotel. Refer to page 7 for details.**

## WAIKOLOA BEACH MARRIOTT RESORT & SPA



69-275 Waikoloa Beach Drive, Waikoloa  
MAP PAGE 28

From **\$1219\*\***

- ❖ Sunset Luau with Hawaiian cuisine and dancing on Mondays and Wednesdays
- ❖ Three outdoor swimming pools and a waterside
- ❖ Short drive to Waikoloa Beach Resort's two championship golf courses

**Location:** Fronting directly onto the golden sands of Anaeoh'omalua Bay on the Kohala Coast. Distances: Beachfront, Town centre 12km.

**Property Features:** Wi-Fi (extra charge), Restaurant, Bar, Pools (2 – heated infinity and children's), Mandara Spa, Gym, Guest laundry, 290 rooms.

**Room Features:** Balcony, Tea/coffee making facilities, Ironing facilities, Hair dryer.

**Max Capacity:** Resort View King/Pool View/Ocean View/Ocean Front/Corner/Cabana – 4.

**\* Mandatory fee of USD35.39 applies per room per day, to be paid directly to the hotel. Refer to page 7 for details.**



# ISLAND OF HAWAI'I ACCOMMODATION

## OUTRIGGER KONA RESORT & SPA



Resort View

78-128 Ehukai Street, Kailua-Kona  
MAP PAGE 28

From **\$704\*\***

- ❖ The resort overlooks Keauhou's giant manta ray coastal feeding ground
- ❖ Feast & Fire Luau held on-site Monday and Thursday evenings
- ❖ Hula, lei-making and ukulele lessons available, plus guided history tour

**Location:** Standing at the entrance to Keauhou Bay on the Kona Coast and the closest resort to Hawai'i Volcanoes National Park. Distances: Beachfront, Town centre 1.6km.

**Property Features:** Cultural Hawaiian activities, Wi-Fi (extra charge), Pools (2), Spas (2), Restaurants (2), Bar, Gym, Day spa, Tennis courts (2), Parking (extra charge), 511 rooms.

**Room Features:** Air-conditioning, Balcony, Cable TV, Tea/coffee making facilities, Ironing facilities.

**Max Capacity:** Resort View/Partial Ocean View Club/Ocean View/Ocean View Club/Ocean Front/Ocean Front Club/Club Ocean View Suite/Club Oceanfront Suite/Club Deluxe Oceanfront Suites/Presidential Suite – 4.

† Mandatory fee of USD41.29 applies per room per day, to be paid directly to the hotel. Refer to page 7 for details.



FREE



## HILTON WAIKOLOA VILLAGE



Palace Tower Resort View

69-425 Waikoloa Beach Drive, Waikoloa  
MAP PAGE 28

From **\$712\*\***

- ❖ Close to 27 holes of championship golf
- ❖ Mahogany canal boats and trams available for travelling around the grounds
- ❖ Multiple dining options including the Legends of Hawaii Luau

**Location:** In Waikoloa along the Kohala Coast on 62 oceanfront acres. Distances: Beachfront, Town centre 1.5km.

**Property Features:** Wi-Fi (extra charge), Cultural Hawaiian activities, Pools (3), Restaurants (4), Café (1), Bars (2), Day spa, Tennis court, Children and family activities, 664 rooms

**Room Features:** Air-conditioning, Balcony, Tea/coffee making facilities, Cable TV.

**Max Capacity:** Palace Tower Resort View/Palace Tower Ocean View/Makai at Lagoon Tower Mountainside/Makai at Lagoon Tower Oceanside – 4. Other room types also available.

† Mandatory fee of USD53.08 applies per room per day, to be paid directly to the hotel. Refer to page 7 for details.



## FAIRMONT ORCHID



Fairmont Garden View

1 North Kaniiku Drive, Kohala Coast  
MAP PAGE 28

From **\$989\*\***

- ❖ Oceanfront cabanas and Hawaiian-inspired treatments at Spa Without Walls
- ❖ White-sand beach, swimming lagoon and 930 square metre oceanside pool
- ❖ Six restaurants and bars including the highly acclaimed Brown's Beach House

**Location:** Beachfront property on the Kohala Coast. Distances: Beachfront, Town centre 16km.

**Property Features:** Pool, Restaurants (4), Bars (3), Café, Day spa, Gym, Golf course, Tennis court, Parking, Resort shop, 540 rooms.

**Room Features:** Air-conditioning, Balcony, Tea/coffee making facilities, Bathrobes, Ironing facilities, Hair dryer, Safe.

**Max Capacity:** Fairmont Garden View/Partial Ocean View/Ocean View/Deluxe Ocean View/Ocean Front – 4.

† Mandatory fee of USD54.72 applies per room per day, to be paid directly to the hotel. Refer to page 7 for details.



FREE



Na Pali Coast

REF.	APARTMENTS	PAGE
1	Aston at Poipu Kai	32
2	Waipouli Beach Resort & Spa Kaua'i by OUTRIGGER	32

REF.	HOTELS	PAGE
2	Aston Islander on the Beach	32
1	Grand Hyatt Kaua'i Resort & Spa	33
2	Kaua'i Shores Hotel	32
3	OUTRIGGER Kaua'i Beach Resort	33
1	Sheraton Kaua'i Resort	33



# KAUAI

Kaua'i has incredible natural beauty with soaring mountains, jagged cliffs and cascading waterfalls. Discover the island's charm on one of the 60 sandy beaches – some of the best are Poipu Beach, Lydgate Beach Park and Kealia Beach. For adventure, hike Koke'e State Park or kayak along the Wailua River.

## SEE

- Marvel at Waimea Canyon, known as the 'Grand Canyon of the Pacific'

## DO

- Try ziplining above Kaua'i's lush valleys
- Go mountain tubing down the old plantation ditches
- Snorkel at Kee Beach and see an abundance of marine life
- Take a helicopter flight over the Na Pali Coast

## EAT & DRINK

- Cool off with ice cream from Lappert's Hawai'i, located in Hanapepe, Princeville and Koloa

## WHAT'S ON

### Koloa Plantation Days

July (dates to be confirmed)

### Waimea Town Celebration

February (dates to be confirmed)



## AIRPORT TRANSFERS

Get your holiday off to a great start with a door-to-door shared coach transfer service. Convenient transfers are available 24 hours a day, 7 days a week from Lihu'e Airport to Lihu'e, Kapa'a, Poipu and Princeville accommodation. Sit back, relax and be transferred in air-conditioned comfort. Approximate travel distance from Lihu'e Airport to Lihu'e is 3 kilometres, Kapa'a is 16 kilometres, Poipu is 25 kilometres and Princeville is 49 kilometres.

Coach Transfer Per Person	Adult/Child
Lihu'e & Kapa'a accommodation	\$38*^A
Poipu accommodation	\$87*^A
Princeville accommodation	\$134*^A
Private Transfer Per Vehicle	1 to 5 People
Lihu'e accommodation	\$190*^A
Kapa'a accommodation	\$214*^A
Poipu accommodation	\$357*^A

^Price based on way to/from Lihu'e Airport. Children 0 to 3 yrs are free when they do not occupy a seat. Minimum 2 people.



## HAWAII MOVIE TOUR

Experience Hollywood in Hawai'i on this guided tour of Kaua'i's famous movie locations. Fans of Gilligan's Island may recognise Moloa'a Beach. Be awed by Hailua Falls, which was featured in Tropic Thunder. See Coco Palms Resort where Fantasy Island and Blue Hawaii were filmed.

### Includes:

- Visit multiple movie locations
- Return transfers from Lihu'e, Wailua, Poipu and Princeville accommodation

**Duration:** 8 hours

**Departs:** Mon, Wed, Fri from Lihu'e, Wailua, Poipu at 7am

	Adult	Child 4-11 yrs
Full Day tour from Lihu'e & Kapa'a accommodation	\$247*^A	\$198*^A
Full day tour from Poipu accommodation	\$261*^A	\$213*^A

^Minimum 2 people.



## KAUAI ECO ADVENTURE HELICOPTER FLIGHT

This island flight, departing from Lihu'e, flies over areas of the 'Garden Island' which have been part of 75 Hollywood film productions. The pilots will take time to share with you the grandeur of Kaua'i that attracts visitors from around the world.

### Includes:

- Spectacular views of the 'garden island'
- Expert pilot with informative commentary
- Return transfers from Kaua'i accommodation

**Duration:** 45 – 55 minutes

**Departs:** Eight times daily between 8am and 4pm

	Adult
Scenic Flight	\$657*

\*FROM PRICES ARE A GUIDE ONLY, subject to change and availability and are in Australian Dollars. Prices are per person, unless otherwise specified and based on travel in low season. For full terms and conditions, refer to the Booking Conditions on the inside back cover of this brochure.

# KAUA'I ACCOMMODATION

## ASTON AT POIPU KAI



1 Bedroom Garden View

1775 Poipu Road, Koloa  
MAP PAGE 31

From **\$800\*\***

- ❖ Apartment-style accommodations that feature full kitchens and washer/dryer
- ❖ Ideal for families and groups with units that accommodate up to 8 guests
- ❖ Within walking distance of Poipu, Brennecke's and Shipwreck beaches

**Location:** On the sunny south side of Kaua'i, spread over 70 landscaped acres. Distances: Beach 750m, Town centre 2.8km.

**Property Features:** Wi-Fi (extra charge), Pools (7), Spa, Barbecue area, Tennis court (9), Parking (free), 383 rooms.

**Room Features:** Fan, Balcony, Tea/coffee making facilities, Kitchen, Cable TV, DVD player, Ironing facilities, Washer/dryer, Hair dryer, Safe.

**Max Capacity:** 1 Bedroom Ocean View – 2, 1 Bedroom Garden View/2 Bedroom Garden View – 4, 2 Bedroom Ocean View – 6.

**+ Mandatory fee of USD11.79 applies per room per day plus a cleaning fee from USD212.33 and a damage protection charge of USD93.18 applies per room per stay, to be paid directly to the hotel. Refer to page 7 for details.**

## ASTON ISLANDER ON THE BEACH



440 Aleka Place, Kapa'a  
MAP PAGE 31

From **\$493\*^+**

- ❖ Spacious guest rooms each with a private balcony
- ❖ On-site laundry room, great for longer stays
- ❖ Adjacent to the Coconut Marketplace for shopping and dining

**Location:** In a beachfront setting along Kaua'i's Coconut Coast. Distances: Beachfront, Town centre 800m.

**Property Features:** Wi-Fi (extra charge), Pool, Spa, Poolside bar, Guest laundry, Parking (free), Non smoking, 199 rooms.

**Room Features:** Air-conditioning, Balcony, Tea/coffee making facilities, Microwave, DVD player, Cable TV, Ironing facilities, Hair dryer, Safe.

**Max Capacity:** Hotel Garden View/Hotel Partial Ocean View/Hotel Ocean View/Hotel Oceanfront View/1 Bedroom Ocean View – 4.

**^Minimum 2 night stay applies. +Mandatory fee of USD31.85 applies per room per day, to be paid directly to the hotel. Refer to page 7 for details.**

## KAUA'I SHORES HOTEL



Garden

420 Papaloa Road, Kapa'a  
MAP PAGE 31

From **\$507\*\***

- ❖ All guestrooms completely renovated in 2024
- ❖ Experience toes-in-the-sand dining at Lava Lava Beach Club
- ❖ Oceanfront on Waipouli Beach

**Location:** On Kaua'i's Coconut Coast close to historic Kapa'a town, and the Coconut Marketplace with its restaurants and shops. Distances: Beachfront, Town centre 9.5km.

**Property Features:** Wi-Fi (extra charge), Pools (2), Restaurant, Bar, Sundeck, Spa, Fire pit, Lawn games, Bicycle hire (free), Nightly live entertainment, Guest laundry, 200 rooms.

**Room Features:** Air-conditioning, Balcony or patio, Mini fridge, Tea/coffee making facilities, Ironing facilities, Hair dryer, Safe.

**Max Capacity:** Standard/Garden/Pool View/Ocean View/Deluxe Garden View with Kitchenette – 4.

**+ Mandatory fee of USD35.39 applies per room per day, to be paid directly to the hotel. Refer to page 7 for details.**

## WAIPOULI BEACH RESORT & SPA KAUA'I BY OUTRIGGER



4-820 Kuhio Highway, Kapa'a  
MAP PAGE 31

From **\$976\*^+**

- ❖ River pool with waterslides and three sand-bottom whirlpool spas
- ❖ Self-contained units with gourmet kitchen
- ❖ Beauty and spa treatments at Spa by the Sea

**Location:** Set among tropical gardens on the east side of Kaua'i and only steps from the beach. Distances: Beachfront, Town centre 200m.

**Property Features:** Pool, Spas (3), Restaurant, Bar, Day spa, Gym, Parking, 196 rooms.

**Room Features:** Air-conditioning, Balcony, Kitchen (except Studio), Cable TV, Washer/dryer (except Studio), Ironing facilities, Hair dryer, Safe, All rooms non smoking.

**Max Capacity:** Studio – 2, 1 Bedroom – 4, 2 Bedroom – 6.

**^Minimum 2 night stay applies. Price includes a cleaning fee and a damage protection charge. +Mandatory fee of USD51.63 applies per room per day, to be paid directly to the hotel. Refer to page 7 for details.**





**OUTRIGGER KAUA'I BEACH RESORT**



4331 Kaua'i Beach Drive, Lihu'e  
MAP PAGE 31

From **\$620\*\***

- ❖ Greet the sun each morning on this beachfront oasis
- ❖ Rebalance and rejuvenate with a treatment at Hawaiian Rainforest Spa
- ❖ Enjoy signature cocktails and live music nightly at Naupaka Terrace

**Location:** Centrally located along Kaua'i's rustic coastline and only 5 minutes for Lihu'e airport. Distances: Beachfront, Town centre 7km.

**Property Features:** Wi-Fi (extra charge), Private beach, Pools (4 – including 3 lagoon pools, 1 children's), Waterfalls, Waterslide, Restaurants (2), Bar, Nightly entertainment, Room service, Day spa, Gym, 350 rooms.

**Room Features:** Ocean views, Balcony, Tea/coffee making facilities, Cable TV, Docking station, Ironing facilities, Hair dryer, Safe.

**Max Capacity:** Mountain Garden View/Deluxe Mountain Garden View/Lagoon View/Deluxe Lagoon View/Pool View/Deluxe Pool View/Ocean View – 4.

**+ Mandatory fee of USD41.29 applies per room per day, to be paid directly to the hotel. Refer to page 7 for details.**



**SHERATON KAUA'I RESORT**



Deluxe Garden View

2440 Hoonani Road, Poipu Beach  
MAP PAGE 31

From **\$1241\*\***

- ❖ Lagoon pool with ocean views
- ❖ 'Auli'i Lu'au is held twice weekly on-site
- ❖ Large and stylish guest rooms

**Location:** On Kaua'i's sunny south shore in the heart of Poipu Beach. Distances: Beachfront, Town centre 1.3km.

**Property Features:** Wi-Fi (extra charge), Cultural Hawaiian activities, Pools (2), Restaurants (3), Bars (2), Room service, Gym, Guest laundry, Parking (extra charge), 390 rooms.

**Room Features:** Air-conditioning, Balcony, Tea/coffee making facilities, Cable TV, Ironing facilities, Hair dryer, Safe.

**Max Capacity:** Deluxe Garden View/Deluxe Oceanfront/Luxury Oceanfront/Deluxe Oceanfront Suite – 4.

**+ Mandatory fee of USD47.18 applies per room per day, to be paid directly to the hotel. Refer to page 7 for details.**



**GRAND HYATT KAUA'I RESORT & SPA**



Queen Queen

1571 Poipu Road, Koloa  
MAP PAGE 31

From **\$1625\*\***

- ❖ Multi-level pool with saltwater lagoon, lazy river, waterfalls and waterslide
- ❖ Next door to the 18 hole championship Poipu Bay Golf Course
- ❖ Grand Hyatt Kaua'i Luau and Hawaiian cultural activities

**Location:** Set in the sunny south of Kaua'i on Shipwreck's Beach. Distances: Beachfront, Town centre 3.5km.

**Property Features:** Cultural activities, Restaurants (5), Lounges (2), Pools (4), Waterslide, Day spa, Gym, 605 rooms.

**Room Features:** Air-conditioning, Balcony, Tea/coffee making facilities, Bathrobes, Ironing facilities, Hair dryer, Safe.

**Max Capacity:** King/Queen Queen/Resort View King/Partial Ocean King/Ocean View/Club – 3. Other room types also available.

**+ Mandatory fee of USD53.06 applies per room per day, to be paid directly to the hotel. Refer to page 7 for details.**



\*FROM PRICES ARE A GUIDE ONLY, subject to change and availability and are in Australian Dollars. Prices are per room per night for 2 people, unless otherwise specified and based on the lowest room category for travel in low season. For full terms and conditions, refer to the Booking Conditions on the inside back cover of this brochure.

# ACCOMMODATION INDEX

## O'AHU

Aston Waikiki Beach Tower .....	19
Aston Waikiki Circle Hotel .....	14
Aston Waikiki Sunset .....	15
Courtyard by Marriott O'ahu North Shore .....	23
Embassy Suites by Hilton Waikiki Beach Walk .....	16
Halekulani .....	21
Hilton Hawaiian Village Waikiki Beach Resort .....	19
Hilton Waikiki Beach Resort & Spa .....	16
Holiday Inn Express Waikiki .....	14
Hyatt Centric Waikiki Beach .....	16
Hyatt Regency Waikiki Beach Resort & Spa .....	20
Ilikai Hotel & Luxury Suites .....	18
Ka La'i Waikiki Beach, LXR Hotels & Resorts .....	22
Luana Waikiki Hotel & Suites .....	15
Moana Surfrider, A Westin Resort & Spa .....	21
Oasis Hotel Waikiki .....	14
OUTRIGGER Reef Waikiki Beach Resort .....	20
OUTRIGGER Waikiki Beachcomber Hotel .....	17
OUTRIGGER Waikiki Beach Resort .....	17

OUTRIGGER Waikiki Paradise Hotel .....	18
Prince Waikiki .....	18
The Ritz-Carlton O'ahu, Turtle Bay .....	23
The Ritz-Carlton Residences, Waikiki Beach .....	21
The Royal Hawaiian, A Luxury Collection Resort .....	21
Sheraton Princess Kaiulani .....	16
Sheraton Waikiki Beach Resort .....	19
Waikiki Beach Marriott Resort & Spa .....	19
Waikiki Malia .....	15

## MAUI

Andaz Maui at Wailea Resort .....	26
Aston Ka'anapali Shores .....	25
Aston Maui Ka'anapali Villas .....	26
Fairmont Kea Lani Maui .....	27
Hyatt Regency Maui Resort & Spa .....	27
OUTRIGGER Honua Kai Resort & Spa .....	26
OUTRIGGER Ka'anapali Beach Resort .....	25
Royal Kahana Maui by OUTRIGGER .....	25
Sheraton Maui Resort & Spa .....	26
The Westin Maui Resort & Spa .....	27

## ISLAND OF HAWAII

Aston Kona by the Sea .....	29
Fairmont Orchid .....	30
Fairway Villas Waikoloa by OUTRIGGER .....	29
Hilton Waikoloa Village .....	30
OUTRIGGER Kona Resort & Spa .....	30
Royal Kona Resort .....	29
Waikoloa Beach Marriott Resort & Spa .....	29

## KAUA'I

Aston at Poipu Kai .....	32
Aston Islander on the Beach .....	32
Grand Hyatt Kaua'i Resort & Spa .....	33
Kaua'i Shores Hotel .....	32
OUTRIGGER Kaua'i Beach Resort .....	33
Sheraton Kaua'i Resort .....	33
Waipouli Beach Resort & Spa Kaua'i by OUTRIGGER .....	32



Wailua Falls, Kaua'i

Hawaii Tourism Authority photo by Johnson

Please read these Booking Conditions carefully as they apply to all bookings with Viva Holidays.

## HOW TO BOOK

Contact your ATAS travel agent and request a reservation. All verbal quotes provided are an estimate only and subject to change until confirmed in writing.

## PRICES & CONDITIONS

This brochure was produced on 15 November 2024. Unless otherwise stated, prices are in Australian dollars and include GST where applicable. Exchange rates used when pricing this brochure are as at 5 November 2024. All prices are subject to availability, subject to change and can be withdrawn or varied without notice. Prices are to be used as a guide only. Accommodation prices are based on the lowest room category in low season. All other prices are based on travel in low season. Some prices are based on dynamic rates, which means the price may be higher or lower than the advertised price if the price has been varied by the supplier after this brochure was printed. Price changes may occur by reason of matters outside our control which increase the cost of the Product or Service. Such factors include (without limitation) adverse currency fluctuations, fuel surcharges, or increases to taxes. Surcharges and minimum stays may apply due to demand, Christmas and New Year's Eve, school and public holidays, special events and other circumstances. All prices are the lowest available prices at the time of print and are a guide only. Please check all prices, availability, fees, conditions and information with your travel agent before booking.

If we must change any part of your booking for reasons beyond our control, for example, an Accommodation Supplier overbooks accommodation, or if there is an increase in taxes or Supplier charges, we will notify you. If any such changes result in your holiday costing more or otherwise being materially different from that originally booked, you may cancel the booking and we will refund any monies already paid less any charges levied by Suppliers.

## PRICES DO NOT INCLUDE

Anything not specifically indicated as being an inclusion.

## OMISSIONS & ERRORS

While every effort is made to ensure the accuracy and currency of the information in the brochures, errors or omissions may occur. All errors and omissions identified post the date of publication are notified to our retail partners to advise you. Please check with your agent for all up-to-date corrections, including prices and inclusions.

## DEPOSITS & FINAL PAYMENTS

### Deposit

A minimum non-refundable deposit of \$55 per person is payable within 7 days of confirmation of your booking. You will be notified at the time of booking if any additional deposit is required. All deposits are non-refundable for changes of mind or cancellations by you (subject to your rights under the Australian Consumer Law).

### Final Payment

Final payment of your holiday cost is required no later than 30 days prior to departure or by sale end date or by the payment deadline specified in individual package conditions, whichever is earlier. Some services may require full payment at the time of booking. For bookings made less than 31 days prior to travel, full payment of holiday cost is required at the time your booking is confirmed.

Please ensure payments are made by the due dates. If this does not happen, our system will automatically cancel the booking without notice or liability to you.

Only upon payment of the full cost of your holiday do you have a final booking with the Supplier of the relevant good and/or service. In arranging your booking, Viva Holidays is acting as the agent of the Supplier of the relevant Product and at no time do you have a contract with Viva Holidays.

## CREDIT & DEBIT CARD SURCHARGES

A fee will apply for payments made by debit and credit cards. Fees may vary depending on card type. Please check this fee with us or your travel agent when booking.

## FEES

### Amendment Fees

If you wish to change your booking prior to departure, an amendment fee of \$30 will be charged if the overall value of the booking remains the same or decreases, in addition to any fees imposed by the Supplier of each service booked.

## Late Booking Fees

A fee of \$30 will be charged for all bookings made less than 7 days prior to travel.

All fees can be varied without notice.

## CANCELLATIONS & REFUNDS

### Prior to Final Payment

Your deposit is forfeited.

### After Final Payment

There will be no refund of your deposit, in addition to any fees imposed by the Supplier, which may be up to 100% of monies paid.

### After Travel

There will be no refund if you cancel your booking once travel has commenced. There will be no refund for unused services, except for OPEN DATED services where the service was not booked with the Supplier. Requests for refunds received more than 6 months after departure date will not be accepted.

Should a refund after departure be approved, a \$110 refund processing fee will apply.

## RESPONSIBILITY

Viva Holidays acts as an agent for the Suppliers (transport, tour, event or accommodation providers) who provide the various goods and/or services (Products). All bookings are subject to the terms and conditions and limitations of liability imposed by each Supplier. It is therefore important for you to obtain and read the applicable Supplier's terms and conditions as they may limit or exclude their liability to you.

In producing this brochure, we have used information provided by Suppliers. Irrespective of any measures taken by us to ensure the information contained in this brochure is accurate at the time of printing, Viva Holidays disclaims and will be exempt from liability in respect of anything misleading, false, incomplete or inaccurate and any errors, misdescription and all associated disappointment, loss, expense, damage, inconvenience, delay, death, shock, illness or injury, however caused.

Viva Holidays does not control the manner in which Products featured within this brochure are provided. Viva Holidays disclaims and will be exempt from liability for anything to do with the supply of such Products. This includes liability (whether as a matter of contract, tort, statute, restitution, or otherwise) for any direct, indirect or consequential loss, liability, claim, cost, expense, proceeding, demand, penalty, disappointment, death, injury, illness, shock, inconvenience or delay. This limitation of liability also applies irrespective of the cause, including negligence of us or a Supplier, withdrawal, cancellation or failure to provide a Product, delay, any variation in the Product, the provision of substitute Products or a change in the Supplier. Without limitation, Viva Holidays will not be responsible if the Product is not available due to inclement weather conditions or other acts of God, civil disturbances, fire, floods, acts of Government or any other authorities, accident to or failure of machinery or equipment or industrial action.

## MAPS & PHOTOGRAPHS

The maps in this brochure are intended as a guide only and are not to scale. They do not necessarily reflect actual routings or accommodation or attraction locations. Accommodation room photographs are representative only and actual rooms occupied may vary in decor and inclusions from those shown.

Some images used in this brochure are supplied courtesy of tourist bureaus, hotels, tour operators, Hawaii Tourism Authority (HTA)/Daeja Fallas/Tor Johnson/Vincent Lim and Island of Hawai'i Visitors Bureau.

## PRODUCT DESCRIPTIONS

Product descriptions and accommodation ratings featured in this brochure are provided by the individual Suppliers. Facilities, features or ratings are subject to change at any time. Tours may not operate on certain dates and durations and departure times are approximate only. You should check at the time of booking for any changes to published information of which we may be aware.

## BONDS

Bonds or credit card imprints are required by most Suppliers at the time of check-in to cover incidentals and fees not included in your holiday cost.

## TRANSFERS & TOURS

Some Accommodation Suppliers provide courtesy transfers to/from the airport. It is essential that these transfers are pre-booked. Some Tour Suppliers provide complimentary pick up and return to your holiday accommodation and require a minimum number of passengers to operate. If minimum numbers are not achieved tours may be cancelled at short notice. Additionally, some Suppliers reserve the right to cancel departures for other reasons, including bad weather. Some tours and itineraries may also vary and attractions may be substituted due to seasonal conditions. Viva Holidays will not be held liable for a service variation, cancellation, delay or withdrawal, or a Supplier's failure to notify you. A full refund applies for the cancelled tour.

## TRAVEL INSURANCE

We strongly recommend you take out appropriate travel insurance to cover your travel arrangements.

## INTERNATIONAL TRAVEL

Each passenger is responsible for their own visa, passport (with at least 6 months validity), immigration, quarantine, customs and other requirements of the countries to be visited or transited through. Viva Holidays makes no representations as to the safety, conditions or other issues that may arise at any destination. Travel advice is available from the Australian Government at [smartraveller.gov.au](http://smartraveller.gov.au).

## HEALTH

You must ensure you are aware of any health requirements and recommended precautions relevant to your travel and carry all necessary vaccination documentation with you to the countries to be visited. Failure to present required vaccination documentation may result in you being denied entry into a country. We recommend that you consult with your local doctor, travel medical service or specialist vaccination clinic before commencing your travel. General health advice for all destinations is also available from the Australian Government at [smartraveller.gov.au](http://smartraveller.gov.au).

## PRIVACY

Viva Holidays collects information about you (including health information where necessary) to provide products and services to you, process your travel arrangements, facilitate your participation in loyalty programs and conduct marketing activities and market research. If the information is not provided, Viva Holidays may not be able to provide the Service requested. Viva Holidays may disclose your personal information to its related companies, carriers, travel service providers, organisations which provide services to Viva Holidays (more details are available in our Privacy Statement on our website [vivaholidays.com.au](http://vivaholidays.com.au)) and various law enforcement agencies, airports and governments around the world for security, customs and immigration purposes. You may gain access to the information Viva Holidays holds about you by contacting our Privacy Officer in writing at 179 Normanby Road, South Melbourne VIC 3205 Australia or on [privacyofficer@vivaholidays.com.au](mailto:privacyofficer@vivaholidays.com.au).

## MONIES NOT HELD ON TRUST

All monies paid by you to us will be the property of Viva Holidays and will be a debt due and payable to the relevant Supplier (contingent on availing) once the services to which the money relates have been availed, or the relevant booking is cancelled (subject to cancellation fees). You agree and acknowledge that such monies will not be held by Viva Holidays on trust for or on behalf of you, and we may hold such monies in any account as we see fit, including with our own and/or other customer monies.

## GOVERNING LAW

These conditions are governed by the laws of New South Wales, Australia and any action arising under them or in any way connected with a booking may be brought only in a court in New South Wales, Australia, subject to any law which is expressly inconsistent with this.

You acknowledge that you are 18 years of age or older and that you understand and agree with the above terms and conditions and our Privacy Policy. Please read our full booking terms and conditions at [vivaholidays.com.au/policies/booking-conditions](http://vivaholidays.com.au/policies/booking-conditions).



# Your holiday begins the moment you step on board

Fly to Honolulu and explore more of Hawai'i with easy connections to Maui, Kaua'i, Kona and Hilo.



helloworld  
TRAVEL  
THE TRAVEL PROFESSIONALS

In store 13 14 15 helloworld.com.au

WE'RE PROUD TO BE **ATAS** travel accredited

**VIVA**  
HOLIDAYS